

# 85 Series

**SIDE ENTRY RJ45  
WITH SHIELDED**



PART NO : 8 5 0 6 - B \* 1 \* S

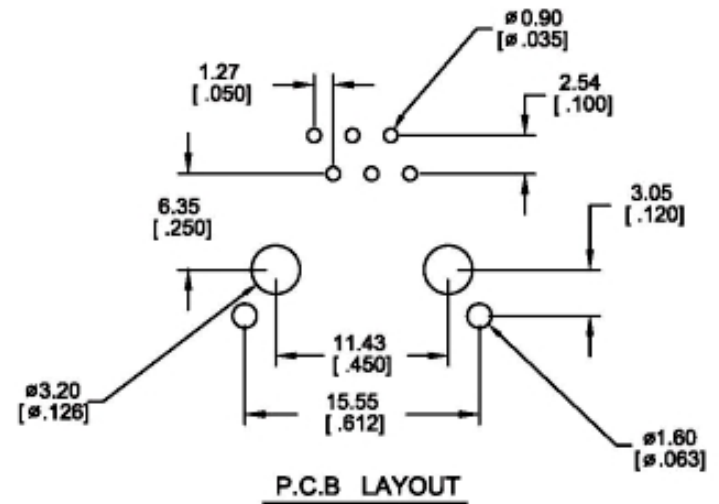
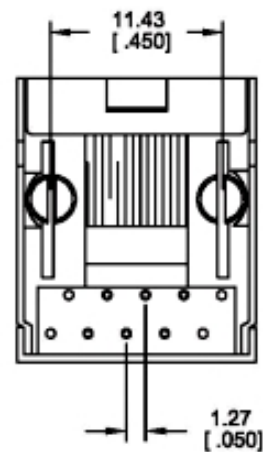
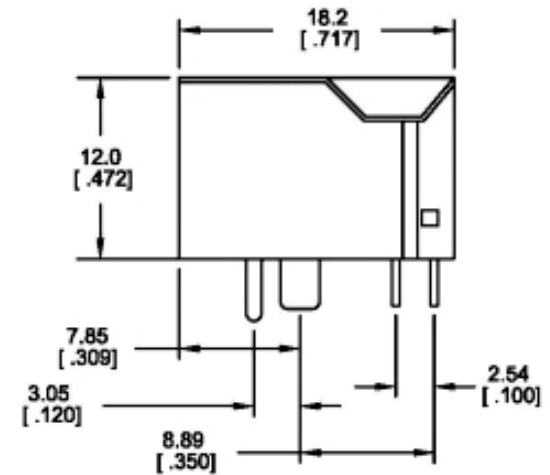
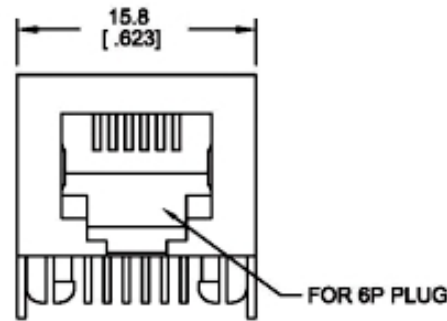
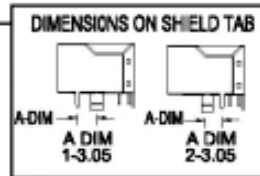
Positions →  
Contacts →  
Housing Color →

For RJ11

Gold Plated

Ports

0 : 3u"  
1 : 6u"  
2 : 15u"  
3 : 30u"  
4 : 50u"



# MODULAR JACKS

## 85 Series

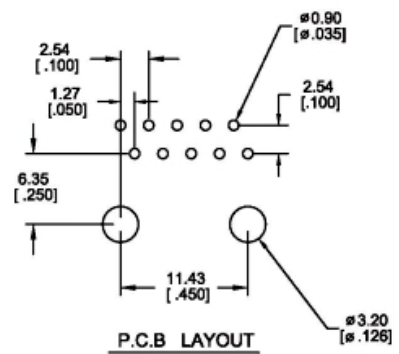
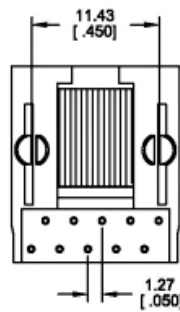
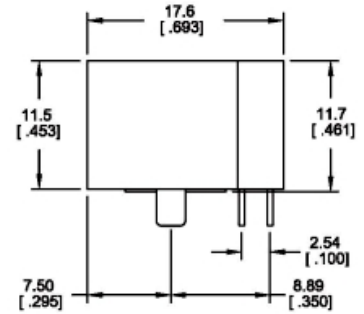
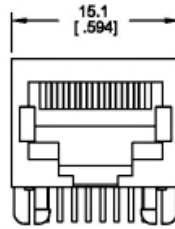
**SIDE ENTRY RJ11  
NON SHIELDED**



PART NO: 8500-B\*1

Positions  
Contacts  
Housing Color

Gold Plated  
0: 3u"  
1: 6u"  
2: 15u"  
3: 30u"  
4: 50u"



## 85 Series

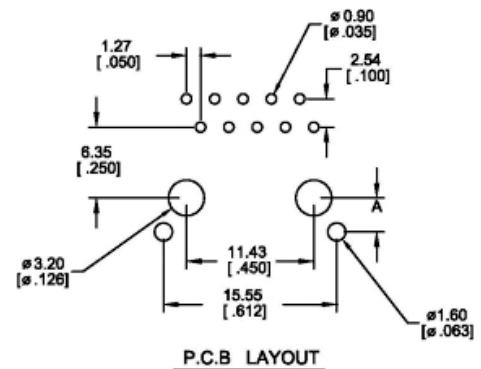
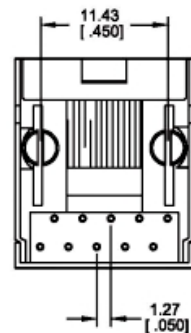
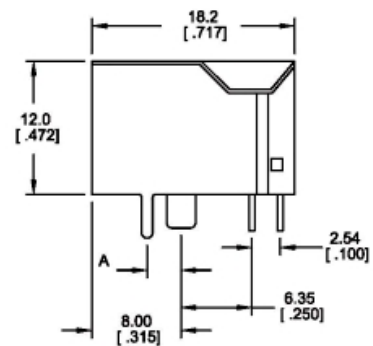
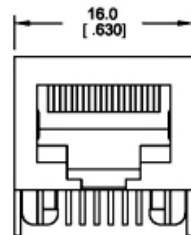
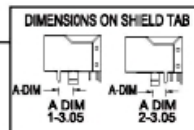
**SIDE ENTRY RJ11  
WITH SHIELDED**



PART NO: 8500-B\*1\*

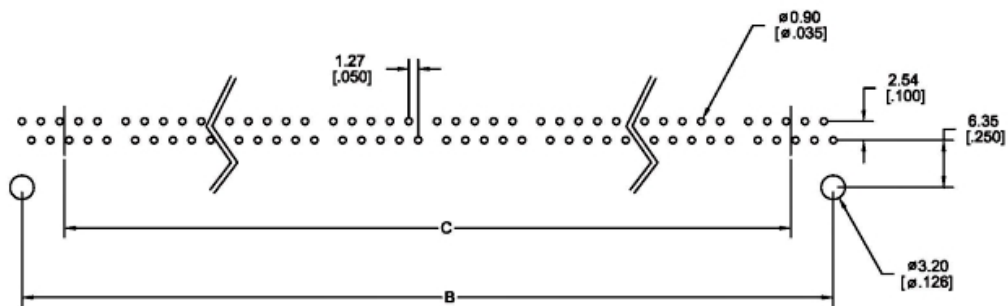
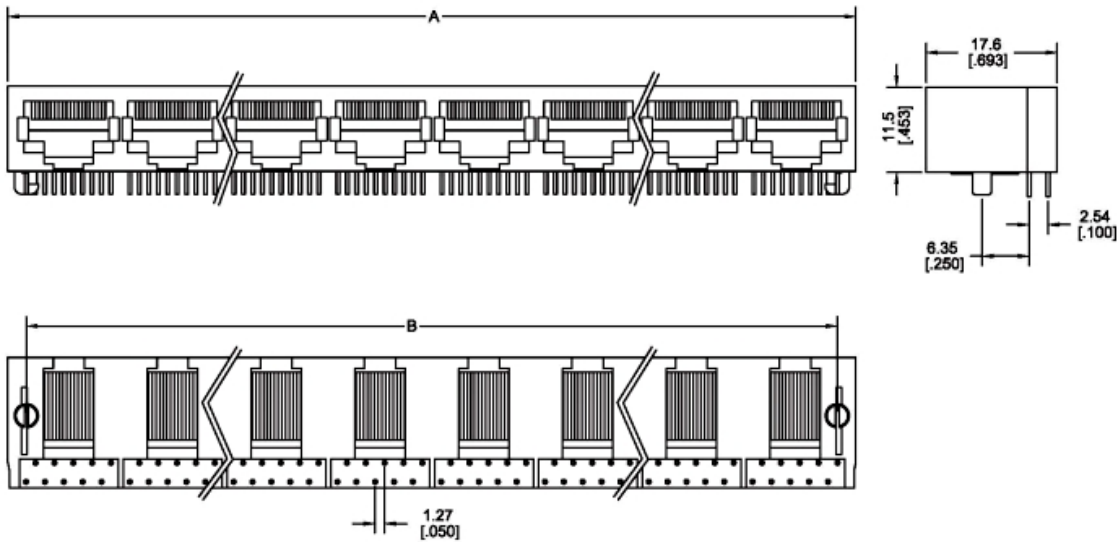
Positions  
Contacts  
Housing Color

Gold Plated  
0: 3u"  
1: 6u"  
2: 15u"  
3: 30u"  
4: 50u"



## 85 Series

**MULTI - PORT P.C.B JACK  
NON SHIELDED**



P.C.B. LAYOUT

PART NO: 8500-B\*\*

Positions  
Contacts  
Housing Color

Gold Plated

Ports  
4 : 4Ports  
6 : 6Ports  
8 : 8Ports

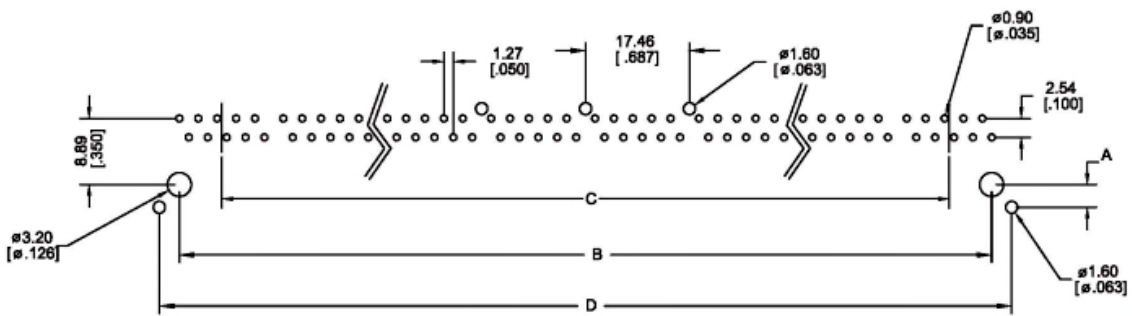
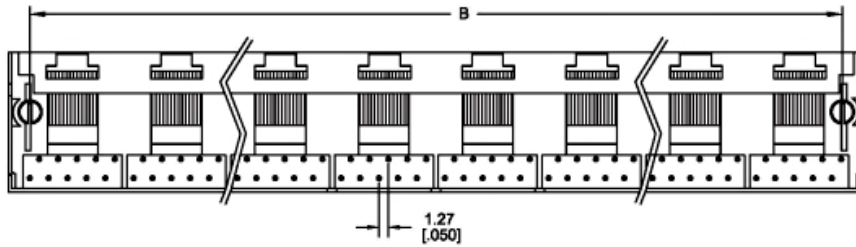
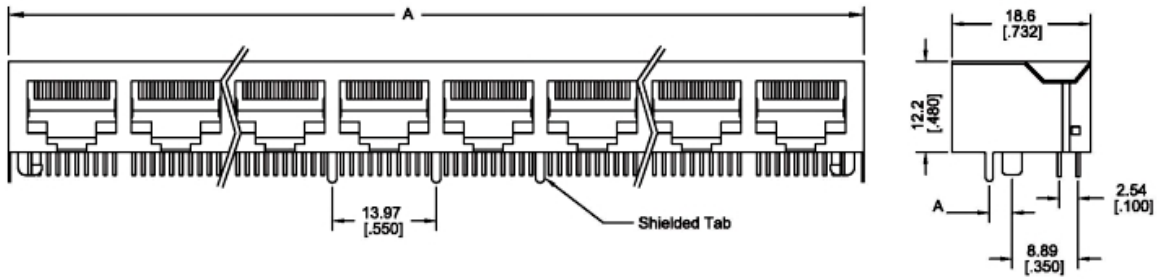
0 : 3u"  
1 : 6u"  
2 : 15u"  
3 : 30u"  
4 : 50u"

Dimensions	No. Of Ports		
	4	6	8
A	58.3	86.3	114.1
B	53.34	81.25	109.20
C	41.91	69.85	97.79

# MODULAR JACKS

## 85 Series

MULTI - PORT P.C.B JACK  
NON SHIELDED



P.C.B LAYOUT

PART NO: 8500-B\*\*\*-3

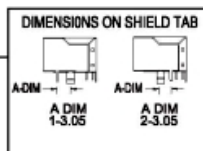
Positions: 1, 2, 3, 4

Contacts: 1, 2, 3, 4

Housing Color: Gold Plated

No Of Tab: 1, 2, 3, 4

Ports: 4 : 4Ports, 6 : 6Ports, 8 : 8Ports



Dimensions	No. Of Ports		
	4	6	8
A	59.1	87.1	115.0
B	53.34	81.28	109.20
C	41.94	69.90	97.86
D	58.70	86.64	114.56