

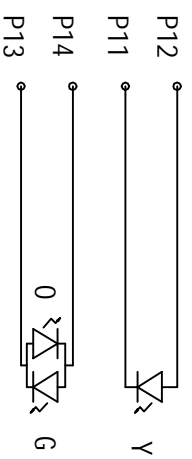
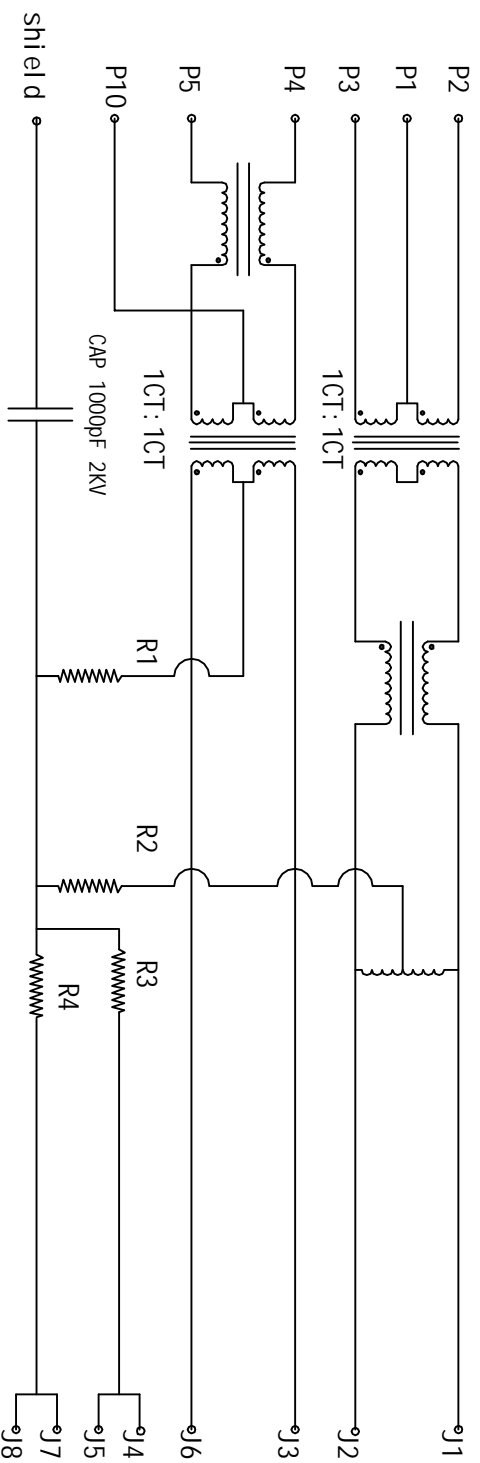
# SPECIFICATION FOR APPROVAL

PRODUCT NAME: RJ45+USB with transformer and LED,W/O  
EMI , 10/100BT,

PRODUCT NO : KW-70003-6

CUSTOMER NO :

REV : \_\_\_\_\_ DATE : \_\_\_\_\_

# ELECTRICAL SPECIFICATIONS:

1. 0 TURN RATIO: (P2-P3) : (J1-J2)  
(P4-P5) : (J3-J6)

: 1:1 ± 3%  
: 1:1 ± 3%

SIZE	DRAWING NO.	REV
A	KW-70003-6	01
SCALE		SHEET
N/A		2 OF 5

2.0 INDUCTANCE: (P2-P3) 350uH MIN @0.1V, 100KHZ, 8mA DC BIAS  
(P4-P5) 350uH MIN @0.1V, 100KHZ, 8mA DC BIAS

3.0 LEAKAGE INDUCTANCE: P2~P3(WITH J1 AND J2 SHORT) : 0.3uH MAX @1MHZ  
P4~P5(WITH J3 AND J6 SHORT) : 0.3uH MAX @1MHZ

4.0 INTERWINDING CAPACITANCE: (P2-P3): (J1~J2) : 35pF MAX @ 1MHZ  
(P4-P5): (J3~J6) : 35pF MAX @ 1MHZ

5.0 DC RESISTANCE: (J1~J2): (J3~J6): (J4~J5): (J7~J8) : 1.2 OHMS MAX

6.0 RETURN LOSS: 1MHZ TO 30MHZ : -19dB MIN  
30MHZ TO 60MHZ : -13dB MIN  
60MHZ TO 80MHZ : -12dB MIN  
80MHZ TO 100MHZ : -10dB MIN

7.0 DIELECTRIC WITHSTAND: (P2-P3): (J1~J2) : 1500VAC  
(P4-P5): (J3~J6) : 1500VAC

8.0 INSERTION LOSS: RS=RL=1000HM 100KHZ TO 80MHZ : -1.1dB MIN

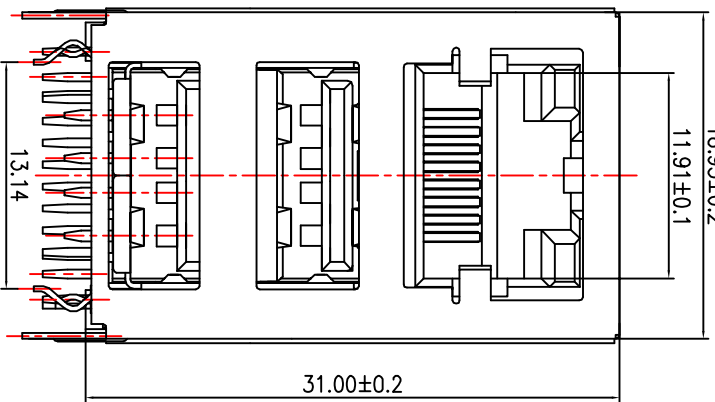
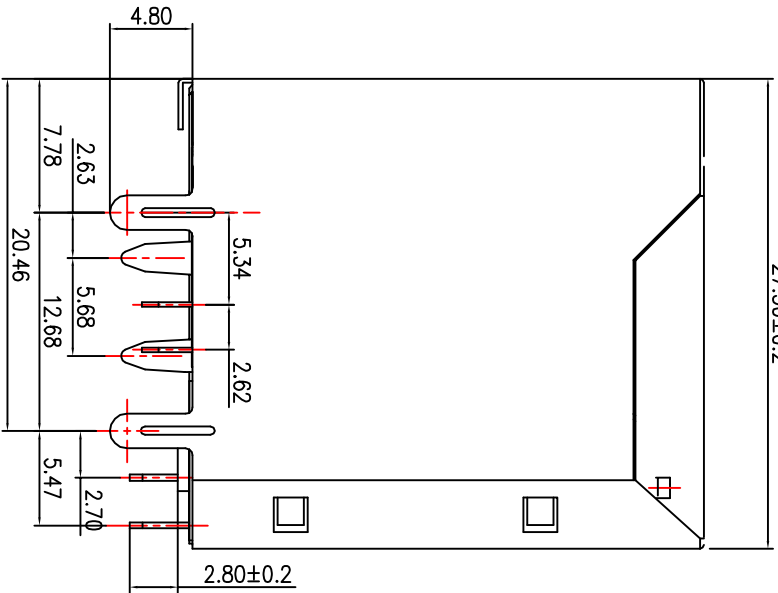
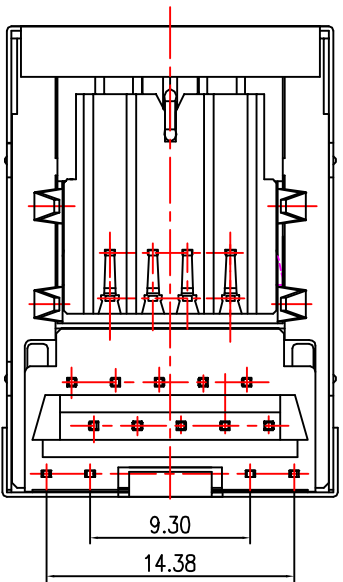
9.0 RISE TIME : RS=1000HMSAND RL=1000HMS : 3.0nS MAX  
OUTPUT VOLTAGE=1V PEAK : 3.0nS MAX  
PULSE WIDTH=112nS

10.0 CROSS TALK: 1MHZ TO 100MHZ -[33-20LOG(F/50MHZ)] MIN

11.0 COMMON TO COMMON MODE ATTENUATION: 30MHZ TO 100MHZ : 35dB TYP

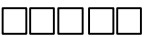
SIZE	DRAWING NO.	REV
A	KW-70003-6	01
SCALE		SHEET
N/A		3 OF 5

# MECHANIC SPECIFICATIONS:

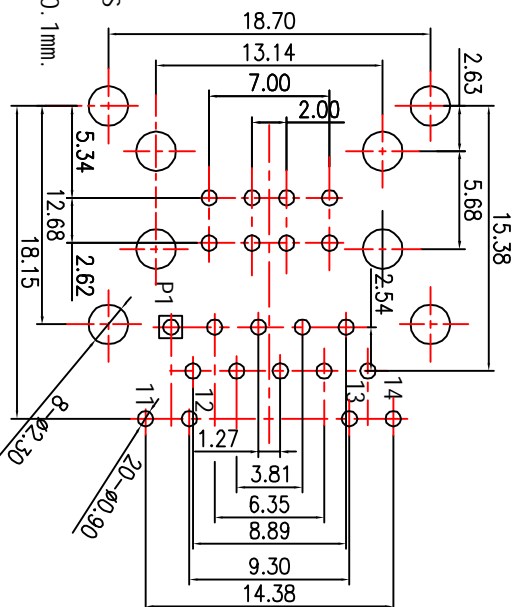


## NOTES:

- CONNECTOR MATERIAL:  
HOUSING: THERMOPLASTIC UL94 V-0  
CONTACT/SHIELD: COOPER ALLOY  
SHIELD PLATING: NICKEL OR TIN  
CONTACT PLATING: SELECTIVE GOLD,  
50 MICRO-INCHS MIN  
30 MICRO-INCHS MIN  
15 MICRO-INCHS MIN  
6 MICRO-INCHS MIN  
3 MICRO-INCHS MIN  
IN CONTACT AREA



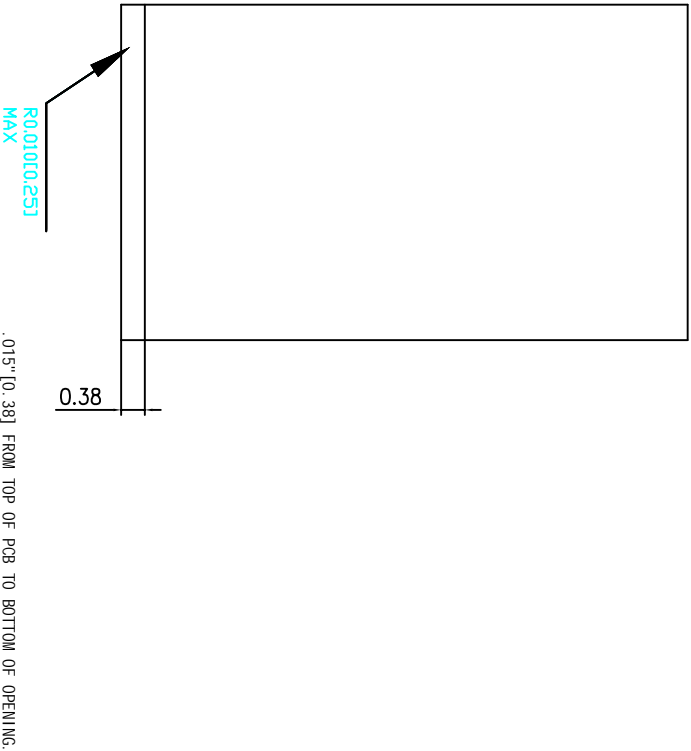
- PIN NOT ELECTRICALLY CONNECTED MAYBE OMITTED SEE ELECTRICAL DRAWING FOR OMITTED PINS
- TOLERANCES COMPLY WITH F. C. C DIMENSION REQUIREMENTS
- WAVE SOLDER COMPATIBLE-PREHEAT 125 C DEGREE/90SECS
- ALL TOLERANCES NOT OTHERWISE SPECIFIED TO BE ±0.1mm.



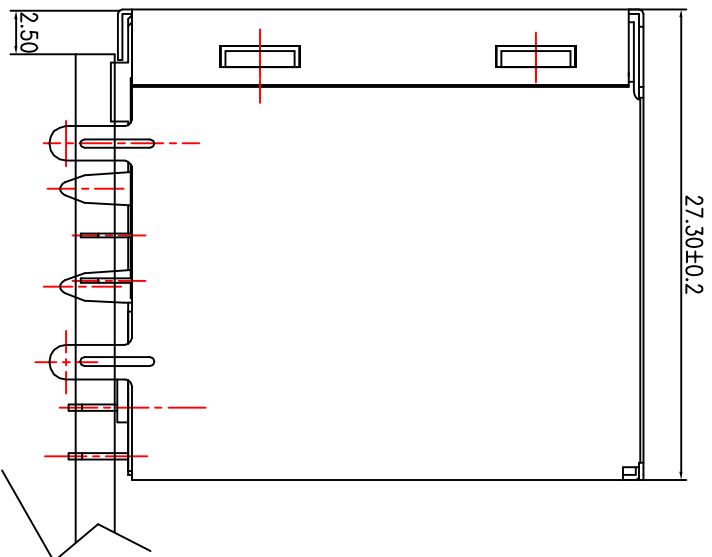
## LED SPECIFICATION

STANDARD LED	WAVELENGTH	Forward V(max)	TYP
GREEN	565nm	2.4 V	2.2 V
YELLOW	590nm	2.5 V	2.1 V

SIZE	DRAWING NO.	REV
A	KW-70003-6	01
SCALE		SHEET
N/A		4 OF 5



1 SUGGESTED PANEL OPENING(N. T. S)



1. THE SUGGESTED PANEL OPENING IS INTENDED TO GIVE THE USER THE ABILITY TO HAVE REASONABLE JACK/PANEL CLEARANCES CAPABILITY.
2. ALL TOLERANCES NOT OTHERWISE SPECIFIED TO BE  $\pm 0.005$  INCH (0.13)

SIZE	DRAWING NO.	REV
A	KW-70003-6	01
SCALE		SHEET
N/A		5 OF 5