

# SPECIFICATION FOR APPROVAL

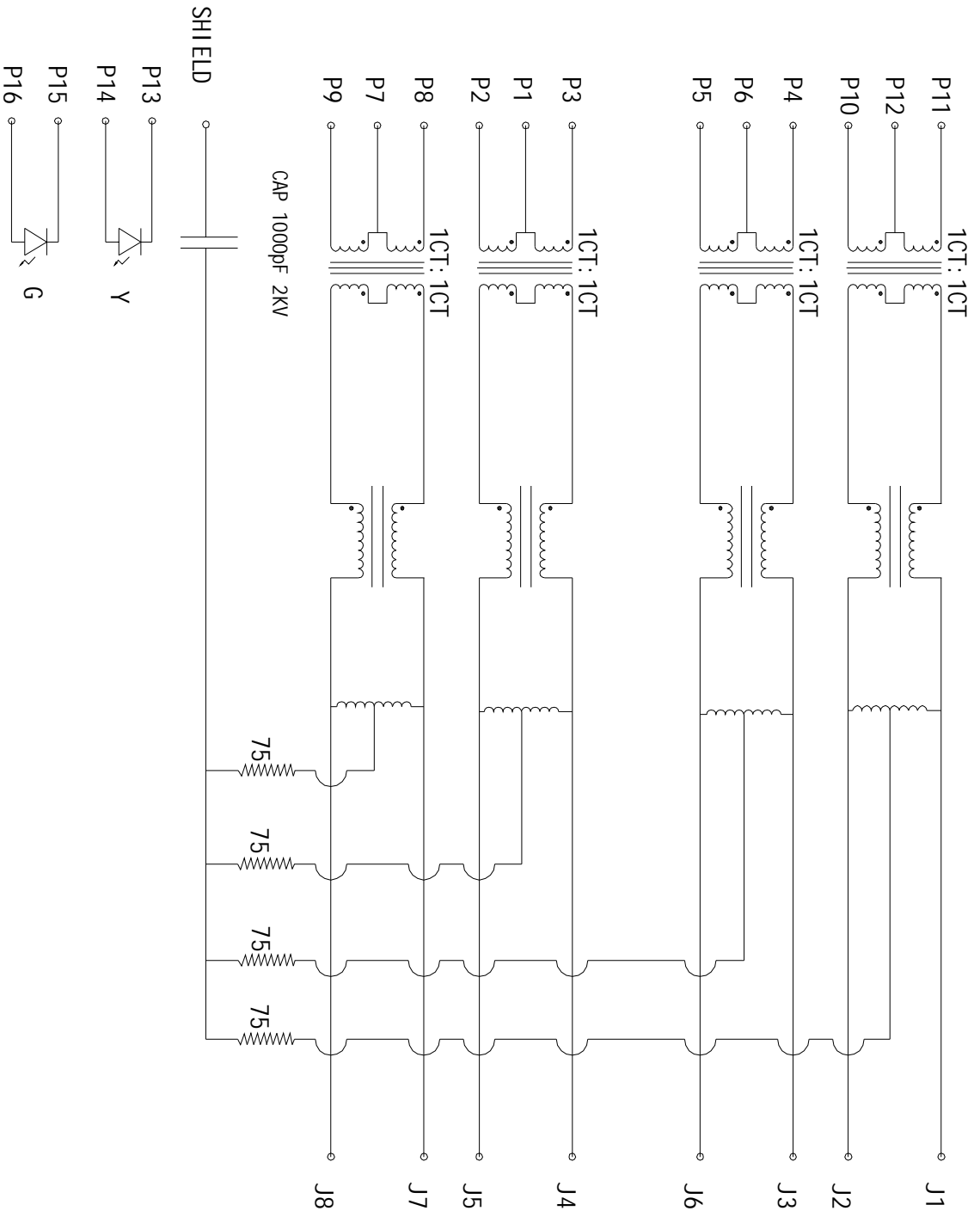
PRODUCT NAME: 59 1\*1port with transformer and  
LED,EMI,1000BT,Before 3.18

PRODUCT NO : KW-60003-1

CUSTOMER NO :

REV : \_\_\_\_\_

DATE : \_\_\_\_\_

# ELECTRICAL SPECIFICATIONS:

- 1. 0 TURN RATIO: (P11~P10): (J1~J2) : 1:1 ±3%
- (P4~P5): (J3~J6) : 1:1 ±3%
- (P3~P2): (J4~J5) : 1:1 ±3%
- (P8~P9): (J7~J8) : 1:1 ±3%

SIZE	DRAWING NO.	REV
A	<b>KW-60003-1</b>	01
SCALE	N/A	SHEET
		2 OF 7

2.0 INDUCTANCE: (P11~P10)

(P4~P5)  
(P3~P2)  
(P8~P9)

350uH MIN @0.1V,100KHZ,8mA DC BIAS  
350uH MIN @0.1V,100KHZ,8mA DC BIAS  
350uH MIN @0.1V,100KHZ,8mA DC BIAS  
350uH MIN @0.1V,100KHZ,8mA DC BIAS

3.0 LEAKAGE INDUCTANCE: P11~P10(WITH J1 AND J2 SHORT)

P4~P5(WITH J3 AND J6 SHORT)  
P3~P2(WITH J4 AND J5 SHORT)  
P8~P9(WITH J7 AND J8 SHORT)

: 0.3uH MAX @1MHZ  
: 0.3uH MAX @1MHZ  
: 0.3uH MAX @1MHZ  
: 0.3uH MAX @1MHZ

4.0 INTERWINDING CAPACITANCE: (P11~P10): (J1~J2)

(P4~P5): (J3~J6)  
(P3~P2): (J4~J5)  
(P8~P9): (J7~J8)

: 35pF MAX @ 1MHZ  
: 35pF MAX @ 1MHZ  
: 35pF MAX @ 1MHZ  
: 35pF MAX @ 1MHZ

5.0 DC RESISTANCE: (J1~J2): (J3~J6): (J4~J5): (J7~J8) : 1.2 OHMS MAX

6.0 RETURN LOSS: 1MHZ TO 30MHZ

30MHZ TO 60MHZ  
60MHZ TO 80MHZ  
80MHZ TO 100MHZ

: -19dB MIN  
: -13dB MIN  
: -12dB MIN  
: -10dB MIN

7.0 DIELECTRIC WITHSTAND: (P11~P10): (J1~J2)

(P4~P5): (J3~J6)  
(P3~P2): (J4~J5)  
(P8~P9): (J7~J8)

: 1500VAC  
: 1500VAC  
: 1500VAC

8.0 INSERTION LOSS: RS=RL=1000OHM 100KHZ TO 80MHZ

: -1.1dB MIN

9.0 RISE TIME : RS=1000OHMS AND RL=1000HMS

OUTPUT VOLTAGE=1V PEAK  
PULSE WIDTH=112nS

: 3.0nS MAX  
: 3.0nS MAX

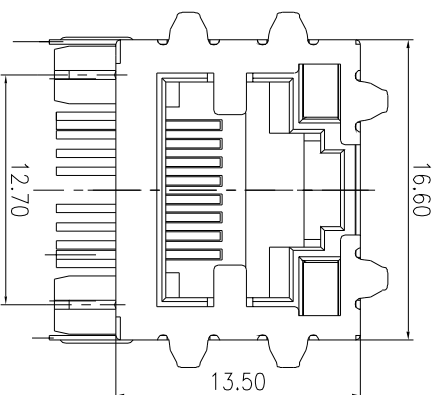
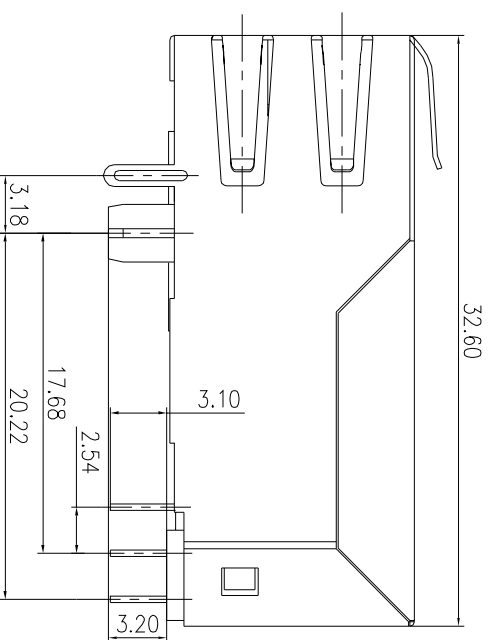
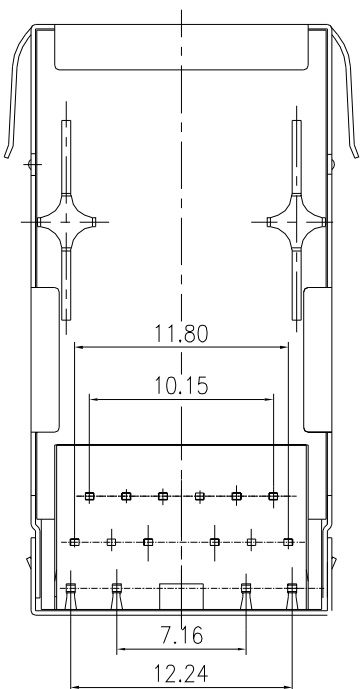
10.0 CROSS TALK: 1MHZ TO 100MHZ

-[33-20LOG(F/50MHZ)] MIN

11.0 COMMON TO COMMON MODE ATTENUATION: 30MHZ TO 100MHZ : 35dB TYP

SIZE	A	DRAWING NO.	KW-60003-1	REV	01
SCALE	N/A			SHEET	3 OF 7

# MECHANIC SPECIFICATIONS:

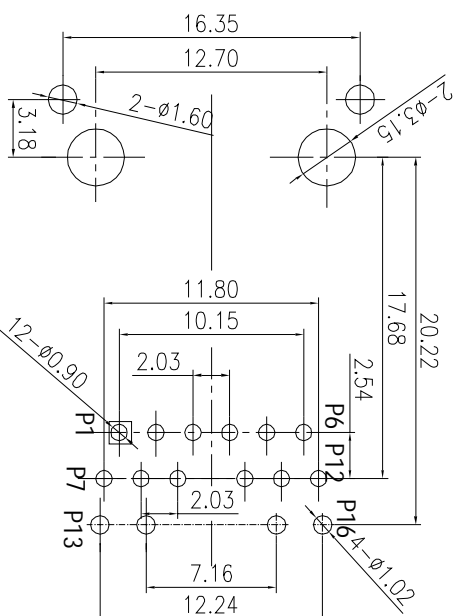


## NOTES:

1. CONNECTOR MATERIAL:  
HOUSING: THERMOPLASTIC UL94 V-0  
CONTACT/SHIELD: COPPER ALLOY  
SHIELD PLATING: NICKEL OR TIN  
CONTACT PLATING: SELECTIVE GOLD,  
  - 50 MICRO-INCHS MIN
  - 30 MICRO-INCHS MIN
  - 15 MICRO-INCHS MIN
  - 6 MICRO-INCHS MIN
  - 3 MICRO-INCHS MIN
- IN CONTACT AREA
2. PIN NOT ELECTRICALLY CONNECTED MAYBE OMITTED SEE ELECTRICAL DRAWING FOR OMITTED PINS
3. TOLERANCES COMPLY WITH F. C. C DIMENSION REQUIREMENTS
4. WAVE SOLDER COMPATIBLE-PREHEAT 125 C DEGREE/90SECS
5. ALL TOLERANCES NOT OTHERWISE SPECIFIED TO BE  $\pm 0.1$ mm.

SIZE	DRAWING NO.	REV
A	<b>KW-60003-1</b>	01
SCALE		SHEET
N/A		4 OF 7

# MECHANIC SPECIFICATIONS:



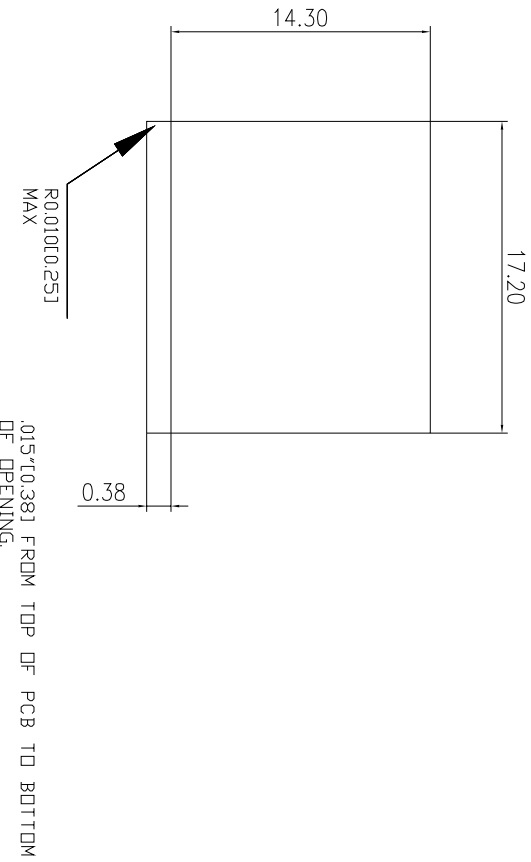
P. C. B RECOMMENDED HOLE LAYOUT SEEN FROM COMPONENT SIDE.

ALL CENTERLINE DIMENSIONS ARE BASIC

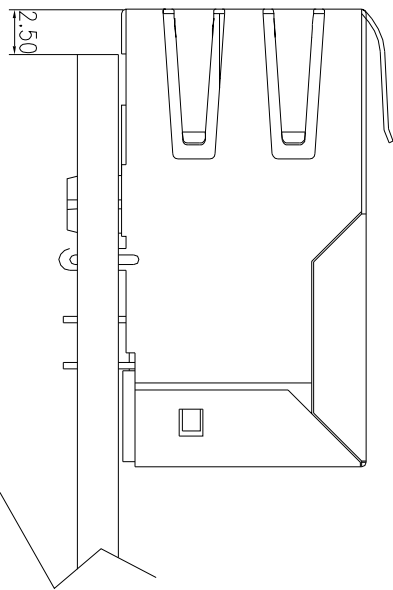
LED SPECIFICATION		
STANDARD LED	WAVELENGTH	Forward V(max)
GREEN	565nm	2.4V
YELLOW	590nm	2.5V
		TYP
		2.2V
		2.1V

\*WITH A FORWARD CURRENT OF 20mA

SIZE	DRAWING NO.	REV
A	<b>KW-60003-1</b>	<b>01</b>
SCALE		SHEET
N/A		5 OF 7



1(SUGGESTED PANEL OPENING(N,T,S))



1.THE SUGGESTED PANEL OPENING IS INTENDED TO GIVE THE USER THE ABILITY TO HAVE REASONABLE JACK/PANEL CLEARANCES CAPABILITY.  
 2.ALL TOLERANCES NOT OTHERWISE SPECIFIED TO BE ±0.005 INCH(0.13)

SIZE	DRAWING NO.	REV
A	<b>KW-60003-1</b>	01
SCALE		SHEET
N/A		6 OF 7