

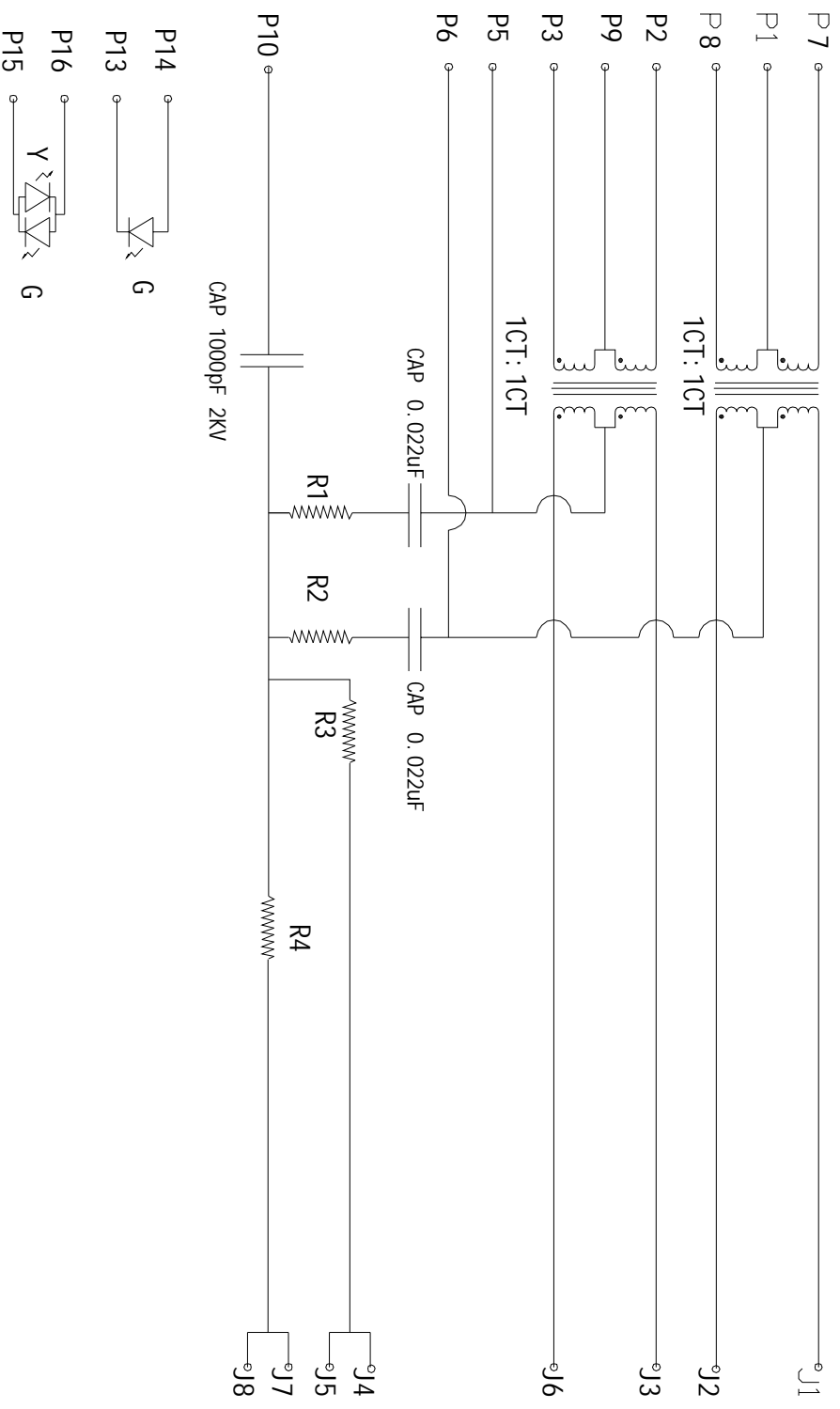
SPECIFICATION FOR APPROVAL

PRODUCT NAME: 59 1*1port with transformer and
EMI , ESD, W/O LED, 10/100BT, Before 3.18

PRODUCT NO : KW-60001

CUSTOMER NO :

REV : _____ DATE : _____



ELECTRICAL SPECIFICATIONS:

1.0 TURNS RATIO: (P7-P8) : (J1-J2)
(P2-P3) : (J3-J6)

: 1:1 ± 3%
: 1:1 ± 3%

SIZE	DRAWING NO.	REV
A	KW-60001	
SCALE N/A		SHEET 2 OF 7

2.0 INDUCTANCE: (P7~P8)
(P2~P3)

350uH MIN @ 0.1V, 100KHZ, 8mA DC BIAS
350uH MIN @ 0.1V, 100KHZ, 8mA DC BIAS

3.0 LEAKAGE INDUCTANCE: P7~P8(WITH J1 AND J2 SHORT)
P2~P3(WITH J3 AND J6 SHORT)

: 0.3uH MAX @1 MHZ
: 0.3uH MAX @1 MHZ

4.0 INTERWINDIND: CAPACITANCE: (P7~P8): (J1~J2)
(P2~P3): (J3~J6)

: 30pF MAX @ 1MHZ
: 30pF MAX @ 1MHZ

5.0 DC RESISTANCE: (J1~J2): (J3~J6):

: 1.2 OHMS MAX

6.0 RETURN LOSS: 1MHZ TO 30MHZ
30MHZ TO 80MHZ

: -18dB MIN
: -12dB MIN

7.0 DIELECTRIC WITHSTAND: (P7~P8): (J1~J2)
(P3~P4): (J3~J6)

: 1500VAC
: 1500VAC

8.0 INSERTION LOSS: RS=RL=1000HM
100KHZ TO 80MHZ

: -1.1dB MIN

9.0 RISE TIME: RS=100 OHMS AND RL=1000HMS
OUTPUT VOLTAGE=1V PEAK
PULSE WIDTH= 112ns

: 3.0ns MAX
: 3.0ns MAX

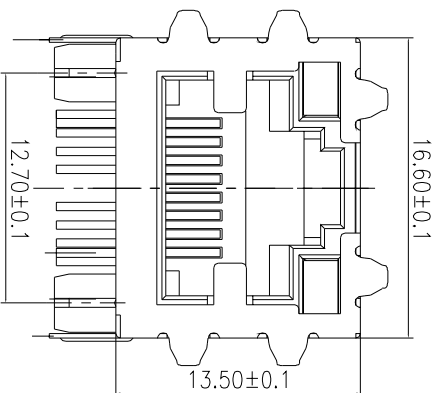
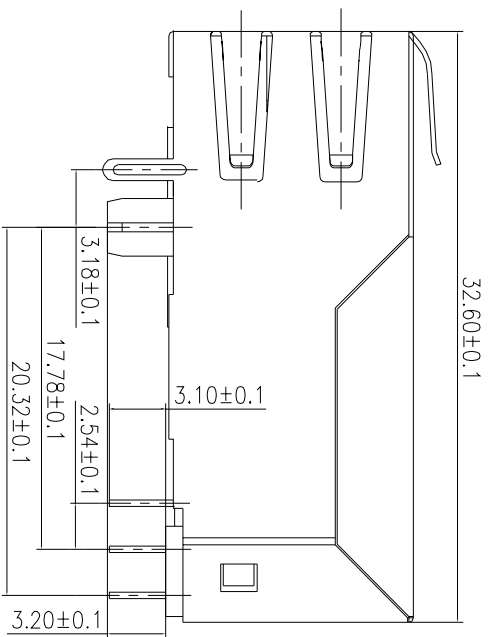
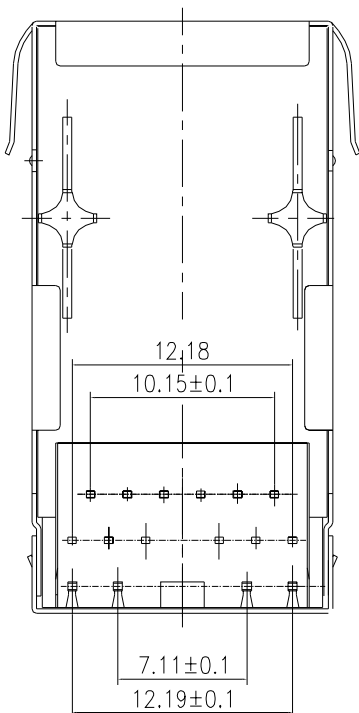
10.0 CROSS TALK: 1MHZ TO 100MHZ

40dB TYP

11.0 COMMON TO COMMON MODE ATTENUATION: 30MHZ TO 100MHZ : 35dB TYP

SIZE	DRAWING NO.	REV
A	KW-60001	01
SCALE N/A		SHEET 4 OF 7

MECHANIC SPECIFICATIONS:

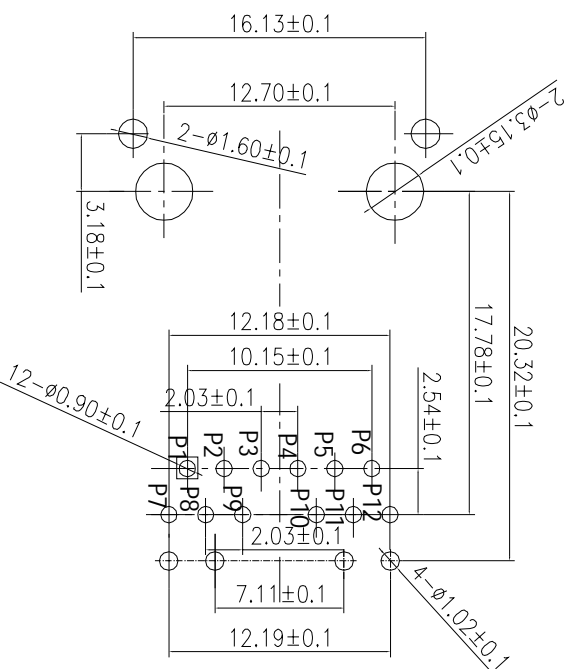


- NOTES:
- CONNECTOR MATERIAL:
HOUSING: THERMOPLASTIC UL94 V-0
CONTACT/SHEILD: COOPER ALLOY
SHEILD PLATING: NICKEL OR TIN
CONTACT PLATING: SELECTIVE GOLD,
 - 50 MICRO-INCHS MIN
 - 30 MICRO-INCHS MIN
 - 15 MICRO-INCHS MIN
 - 6 MICRO-INCHS MIN
 - 3 MICRO-INCHS MIN
 - IN CONTACT AREA

- PIN NOT ELECTRICALLY CONNECTED MAYBE OMITTED SEE ELECTRICAL DRAWING FOR OMITTED PINS
- TOLERANCES COMPLY WITH F. C. C. DIMENSION REQUIREMENTS
- WAVE SOLDER COMPATIBLE-PREHEAT 125 C DEGREE/90SECS
- ALL TOLERANCES NOT OTHERWISE SPECIFIED TO BE ±0.1mm.

SIZE	DRAWING NO.	REV
A	KW-60001	01
SCALE	N/A	SHEET
		4 OF 7

MECHANIC SPECIFICATIONS:



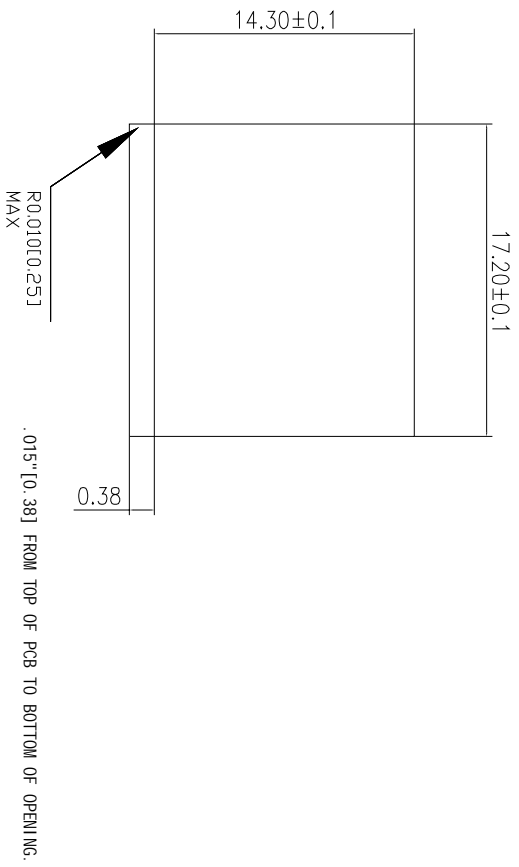
P. C. B RECOMMENDED HOLE LAYOUT SEEN FROM COMPONENT SIDE.

ALL CENTERLINE DIMENSIONS ARE BASIC

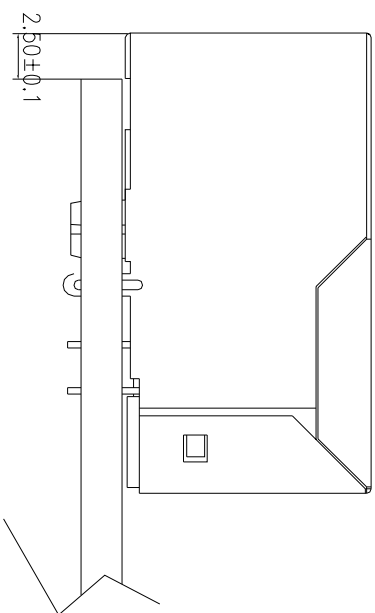
LED SPECIFICATION			
STANDARD LED	WAVELENGTH	Forward V(max)	TYP
GREEN	565nm	2.4V	2.2V
YELLOW	590nm	2.5V	2.1V

*WITH A FORWARD CURRENT OF 20mA

SIZE	DRAWING NO.	REV
A	KW-60001	01
SCALE N/A		SHEET 5 OF 7



1 SUGGESTED PANEL OPENING (N. T. S)



1. THE SUGGESTED PANEL OPENING IS INTENDED TO GIVE THE USER THE ABILITY TO HAVE REASONABLE JACK/PANEL CLEARANCES CAPABILITY.
2. ALL TOLERANCES NOT OTHERWISE SPECIFIED TO BE ±0.005 INCH (0.13)

SIZE	DRAWING NO.	REV
A	KW-600001	01
SCALE		SHEET
N/A		6 OF 7