

SPECIFICATION FOR APPROVAL

PRODUCT NAME: 59 1*1port with transformer and
LED, W/O EMI , 10/100BT Afer 3.05

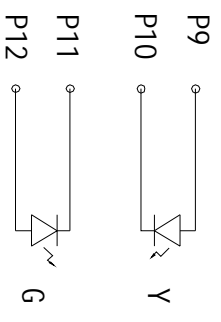
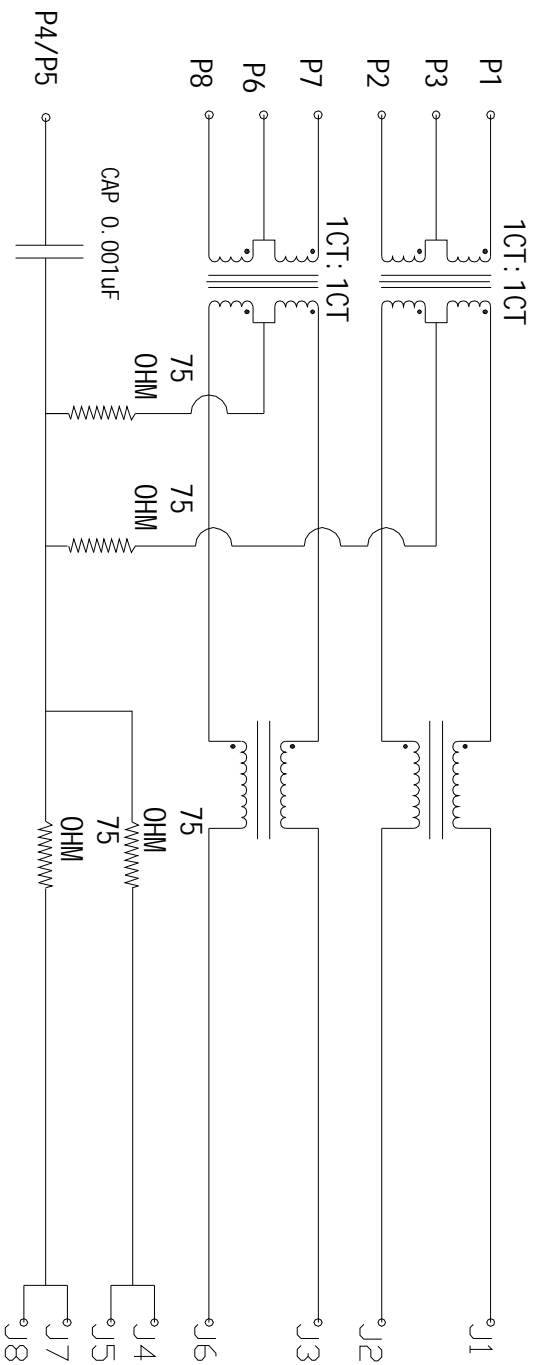
PRODUCT NO : KW-50031

CUSTOMER NO :

REV : _____

DATE : _____

	P	



ELECTRICAL SPECIFICATIONS:

1.0 TURN RATIO: (P1-P2) : (J1-J2) : 1:1 ±3%
 (P7-P8) : (J3-J6) : 1:1 ±3%

SIZE	A	DRAWING NO.	KW-50031	REV	01
SCALE	N/A			SHEET	2 OF 7

2. 0 INDUCTANCE: (P1-P2) 350uH MIN @0. 1V, 100KHZ, 8mA DC BIAS
(P7-P8) 350uH MIN @0. 1V, 100KHZ, 8mA DC BIAS

3. 0 LEAKAGE INDUCTANCE: P1-P2(WITH J1 AND J2 SHORT) : 0. 3uH MAX @1MHZ
P7-P8(WITH J3 AND J6 SHORT) : 0. 3uH MAX @1MHZ

4. 0 INTERWINDING CAPACITANCE: (P1-P2) : (J1~J2) : 35pF MAX @ 1MHZ
(P7-P8) : (J3~J6) : 35pF MAX @ 1MHZ

5. 0 DC RESISTANCE: (J1~J2) : (J3~J6) : 1. 2 OHMS MAX

6. 0 RETURN LOSS: 1MHZ TO 30MHZ : -18dB MIN
30MHZ TO 80MHZ : -12dB MIN

7. 0 DIELECTRIC WITHSTAND: (P1-P2) : (J1 ~ J2) : 1500VAC
(P7-P8) : (J3~ J6) : 1500VAC

8. 0 INSERTION LOSS: RS=RL=1000HM 100KHZ TO 80MHZ : -1. 1dB MIN

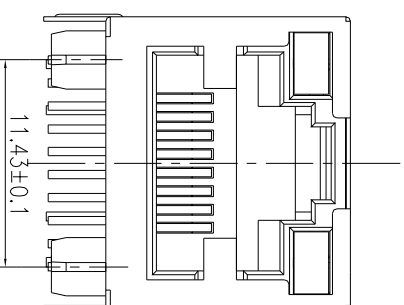
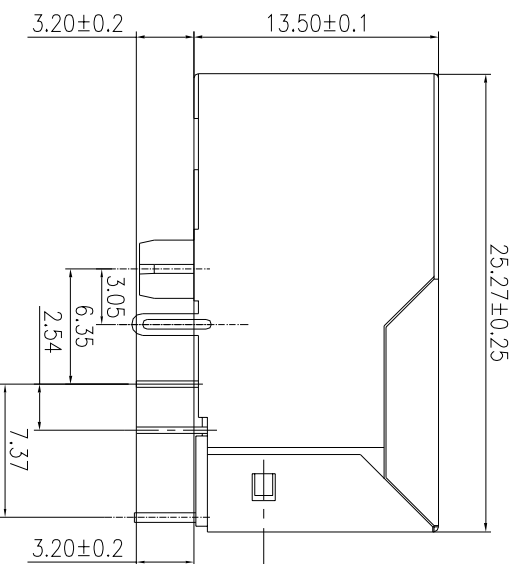
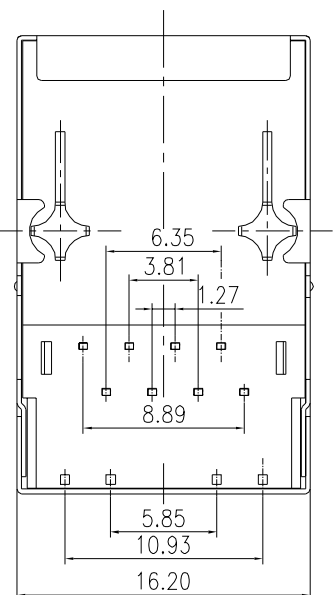
9. 0 RISE TIME : RS=1000HMSAND RL=1000HMS : 3. 0ns MAX
OUTPUT VOLTAGE=1V PEAK
PULSE WIDTH=112ns : 3. 0ns MAX

10. 0 CROSS TALK: 1MHZ TO 100MHZ 40dB TYP

11. 0 COMMON TO COMMON MODE ATTENUATION: 30MHZ TO 100MHZ : 35dB TYP

SIZE	A	DRAWING NO.	REV
SCALE	N/A	KW-50031	01
			SHEET
			3 OF 7

MECHANIC SPECIFICATIONS:



NOTES:

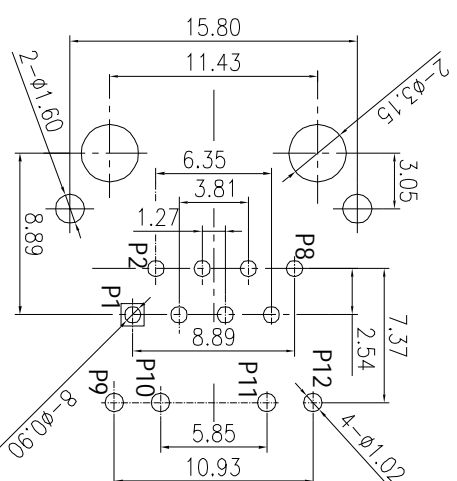
1. CONNECTOR MATERIAL: HOU SING: THERMOPLASTIC UL94 V-0 CONTACT/SHELD: COOPER ALLOY SHELD PLATING: NICKEL OR TIN CONTACT PLATING: SELECTIVE GOLD,
 - 50 MICRO-INCHS MIN
 - 30 MICRO-INCHS MIN
 - 15 MICRO-INCHS MIN
 - 6 MICRO-INCHS MIN
 - 3 MICRO-INCHS MIN
2. PIN NOT ELECTRICALLY CONNECTED MAYBE OMITTED SEE ELECTRICAL DRAWING FOR OMITTED PINS
3. TOLERANCES COMPLY WITH F. C. C. DIMENSION REQUIREMENTS
4. WAVE SOLDER COMPATIBLE-PREHEAT 125 C DEGREE/90SECS
5. ALL TOLERANCES NOT OTHERWISE SPECIFIED TO BE ±0.1mm.

IN CONTACT AREA



SIZE	A	DRAWING NO.	KW-50031	REV	01
SCALE	N/A			SHEET	4 OF 7

MECHANIC SPECIFICATIONS:



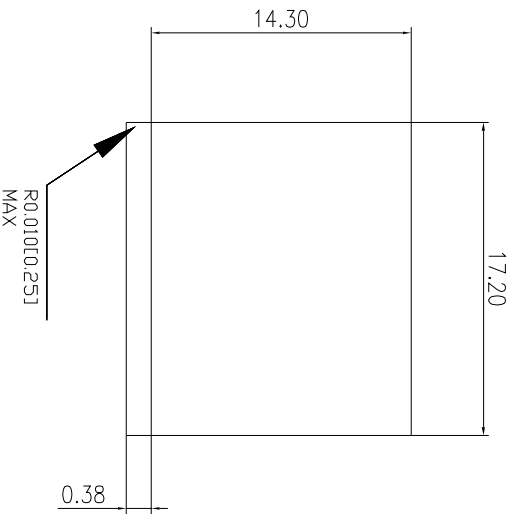
P. C. B RECOMMENDED HOLE LAYOUT SEEN FROM COMPONENT SIDE.

ALL CENTERLINE DIMENSIONS ARE BASIC

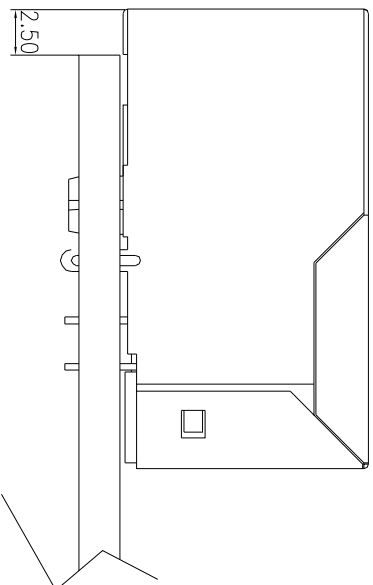
LED SPECIFICATION		
STANDARD LED	WAVELENGTH	Forward V(max)
GREEN	565nm	2.4V
YELLOW	590nm	2.5V
		TYP
		2.2V
		2.1V

*WITH A FORWARD CURRENT OF 20mA

SIZE	DRAWING NO.	REV
A	KW-50031	01
SCALE		SHEET
N/A		5 OF 7



.015" [0.38] FROM TOP OF PCB TO BOTTOM OF OPENING.



SUGGESTED PANEL OPENING (N.T.S)

1. THE SUGGESTED PANEL OPENING IS INTENDED TO GIVE THE USER THE ABILITY TO HAVE REASONABLE JACK/PANEL CLEARANCES CAPABILITY.
2. ALL TOLERANCES NOT OTHERWISE SPECIFIED TO BE ± 0.005 INCH (0.13)

SIZE	DRAWING NO.	REV
A	KW-50031	01
SCALE		SHEET
N/A		6 OF 7