

# SPECIFICATION FOR APPROVAL

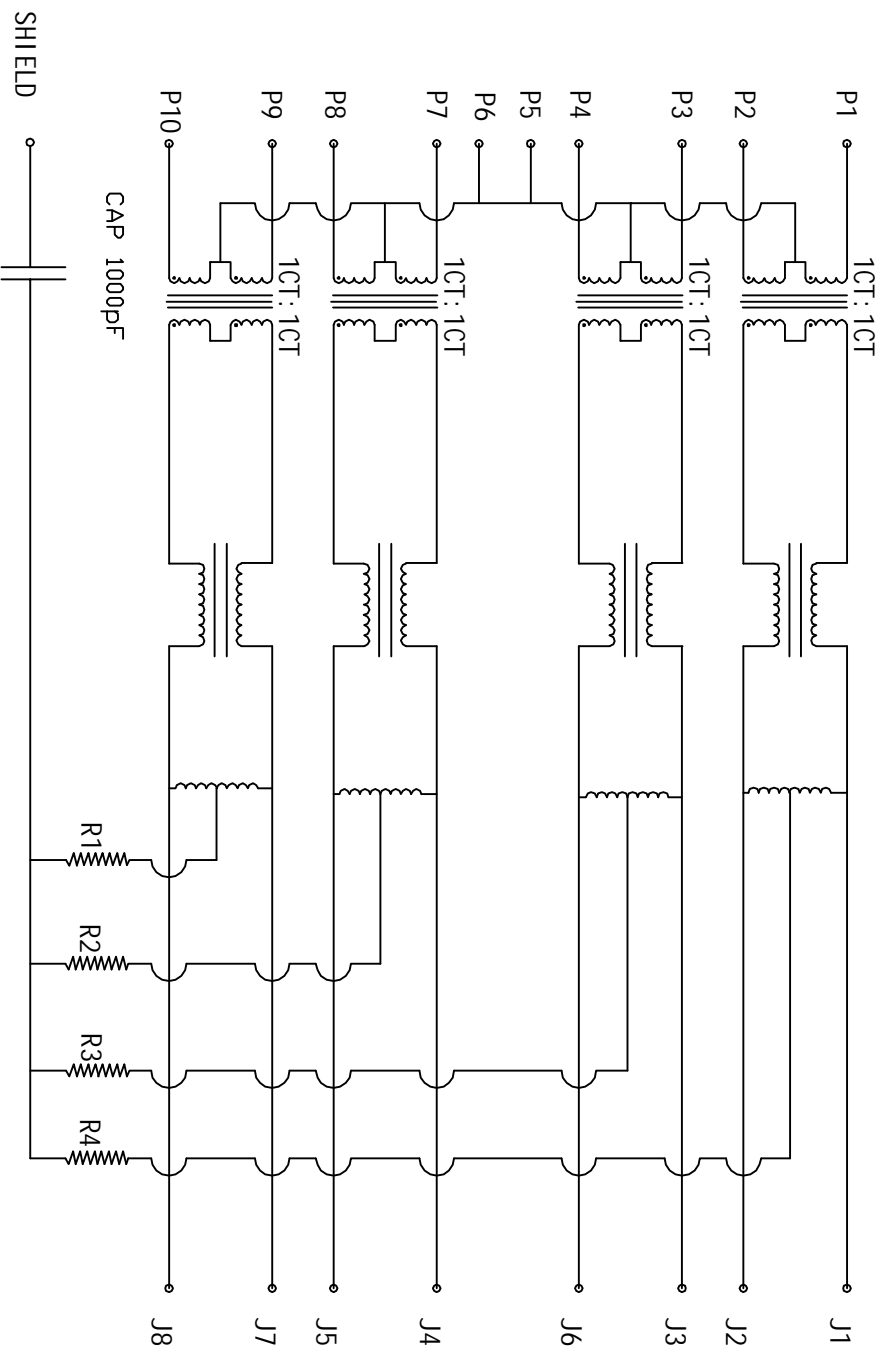
PRODUCT NAME: 59 1\*1port with transformer and  
EMI , LED, 1000BT, After 3.05

PRODUCT NO : KW-50001

CUSTOMER NO :

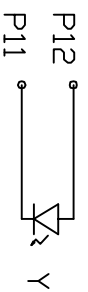
REV : \_\_\_\_\_

DATE : \_\_\_\_\_

# ELECTRICAL SPECIFICATIONS:

- 1.0 TURN RATIO: (P1-P2): (J1-J2) : 1:1 ±3%  
(P3-P4): (J3-J6) : 1:1 ±3%  
(P7-P8): (J4-J5) : 1:1 ±3%  
(P9-P10): (J7-J8) : 1:1 ±3%

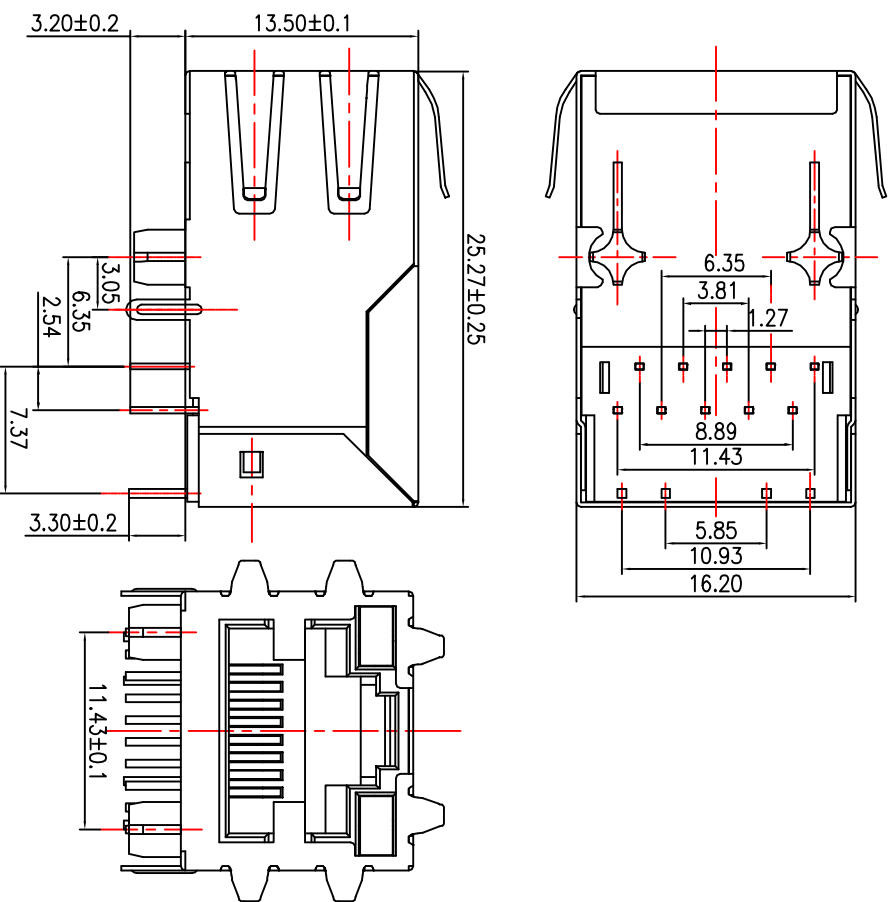


SIZE	DRAWING NO:	REV
A	<b>KW-50001</b>	<b>01</b>
SCALE	N/A	SHEET: 2 OF 7

2. 0 INDUCTANCE: (P1~P2) 350uH MIN @0. 1V, 100KHZ, 8mA DC BIAS  
(P3~P4) 350uH MIN @0. 1V, 100KHZ, 8mA DC BIAS  
(P7~P8) 350uH MIN @0. 1V, 100KHZ, 8mA DC BIAS  
(P9~P10) 350uH MIN @0. 1V, 100KHZ, 8mA DC BIAS
3. 0 LEAKAGE INDUCTANCE: P1~P2(WITH J1 AND J2 SHORT) : 0. 3uH MAX @1MHZ  
P3~P4(WITH J3 AND J6 SHORT) : 0. 3uH MAX @1MHZ  
P7~P8(WITH J4 AND J5 SHORT) : 0. 3uH MAX @1MHZ  
P9~P10(WITH J7 AND J8 SHORT) : 0. 3uH MAX @1MHZ
4. 0 INTERWINDING CAPACITANCE: (P1~P2): (J1~J2) : 35pF MAX @ 1MHZ  
(P3~P4): (J3~J6) : 35pF MAX @ 1MHZ  
(P7~P8): (J4~J5) : 35pF MAX @ 1MHZ  
(P9~P10): (J7~J8) : 35pF MAX @ 1MHZ
5. 0 DC RESISTANCE: (J1~J2): (J3~J6): (J4~J5): (J7~J8) : 1. 2 OHMS MAX
6. 0 RETURN LOSS: 1MHZ TO 30MHZ : -19dB MIN  
30MHZ TO 60MHZ : -13dB MIN  
60MHZ TO 80MHZ : -12dB MIN  
80MHZ TO 100MHZ : -10dB MIN
7. 0 DIELECTRIC WITHSTAND: (P1~P2): (J1~J2) : 1500VAC  
(P3~P4): (J3~J6) : 1500VAC  
(P7~P8): (J4~J5) : 1500VAC  
(P9~P10): (J7~J8) : 1500VAC
8. 0 INSERTION LOSS: RS=RL=1000HM 100KHZ TO 80MHZ : -1. 1dB MIN
9. 0 RISE TIME : RS=1000HMSAND RL=1000HMS : 30nS MAX  
OUTPUT VOLTAGE=1V PEAK : 30nS MAX  
PULSE WIDTH=112nS
10. 0 CROSS TALK: 1MHZ TO 100MHZ : -[33-20LOG(F/50MHZ)] MIN
11. 0 COMMON TO COMMON MODE ATTENUATION: 30MHZ TO 100MHZ : 35dB TYP

SIZE	DRAWING NO:	REV
A	<b>KW-50001</b>	<b>01</b>
SCALE		SHEET:
N/A		3 OF 7

# MECHANIC SPECIFICATIONS:

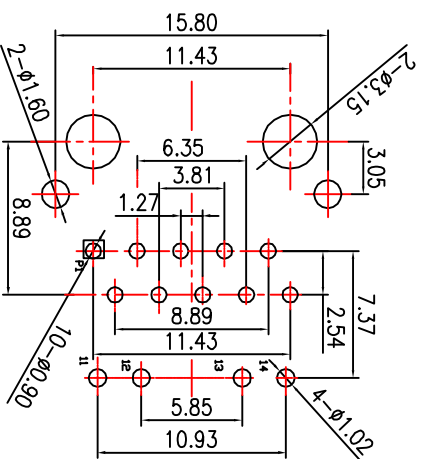


LED SPECIFICATION			
STANDARD LED	WAVELENGTH	Forward V(max)	TYP
GREEN	565nm	2.4V	2.2V
YELLOW	590nm	2.5V	2.1V
ORANGE	613nm	2.5V	2.2V

\*WITH A FORWARD CURRENT OF 20mA

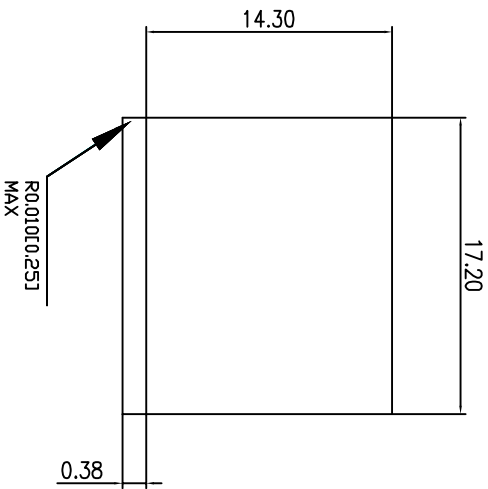
- NOTES:
- CONNECTOR MATERIAL:  
HOUSING: THERMOPLASTIC UL94 V-0  
CONTACT/SHIELD: COPPER ALLOY  
SHIELD PLATING: NICKEL OR TIN  
CONTACT PLATING: SELECTIVE GOLD,  
50 MICRO-INCHS MIN  
30 MICRO-INCHS MIN  
15 MICRO-INCHS MIN  
6 MICRO-INCHS MIN  
3 MICRO-INCHS MIN  
IN CONTACT AREA

- PIN NOT ELECTRICALLY CONNECTED MAYBE OMITTED SEE ELECTRICAL DRAWING FOR OMITTED PINS
- TOLERANCES COMPLY WITH F. C. C DIMENSION REQUIREMENTS
- WAVE SOLDER COMPATIBLE-PREHEAT 125 C DEGREE/90SECS
- ALL TOLERANCES NOT OTHERWISE SPECIFIED TO BE ±0.1mm.
- WORKINGTEMPERATURE: -40° C~85° C.

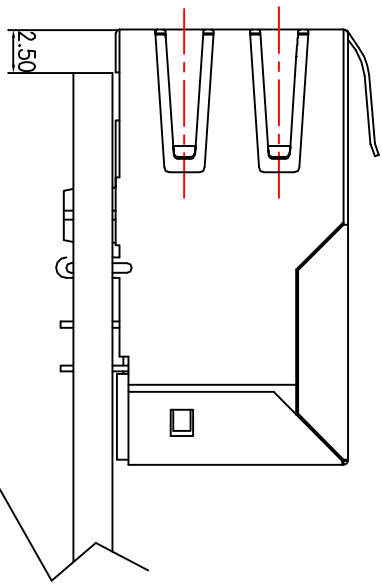


P. C. B RECOMMENDED HOLE LAYOUT SEEN FROM COMPONENT SIDE.  
ALL CENTERLINE DIMENSIONS ARE BASIC\

SIZE	DRAWING NO:	REV
A	<b>KW-50001</b>	<b>01</b>
SCALE	N/A	SHEET: 4 OF 7



.015" (0.381) FROM TOP OF PCB TO BOTTOM OF OPENING.



1.SUGGESTED PANEL OPENING(N. T. S)

1. THE SUGGESTED PANEL OPENING IS INTENDED TO GIVE THE USER THE ABILITY TO HAVE REASONABLE JACK/PANEL CLEARANCES CAPABILITY.
2. ALL TOLERANCES NOT OTHERWISE SPECIFIED TO BE ±0.005 INCH(0.13)

SIZE	DRAWING NO:	REV
A	<b>KW-50001</b>	<b>01</b>
SCALE		SHEET:
N/A		5 OF 7