

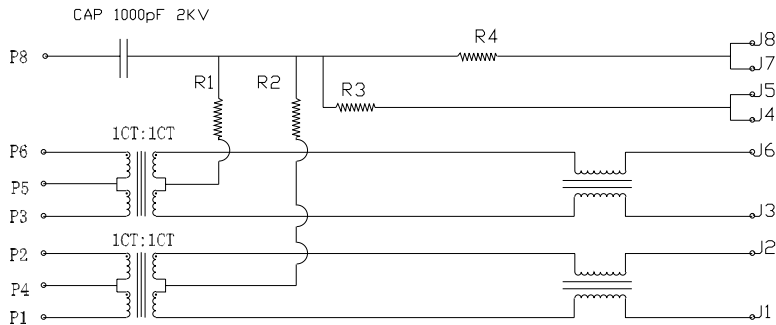
SPECIFICATION FOR APPROVAL

PRODUCT NAME: _____

PRODUCT NO : **KW-10017-3** _____

CUSTOMER NO : _____

REV : _____ DATE : _____



ELECTRICAL SPECIFICATIONS:

- 1.0 TURN RATIO: (P1~P2):(J1~J2) :1:1±3%
 (P3~P6):(J3~J6) :1:1±3%
- 2.0 INDUCTANCE: (P1~P2) 350uH MIN @ 0.1V,100KHZ, 8mA DC BIAS
 (P3~P6) 350uH MIN @ 0.1V,100KHZ, 8mA DC BIAS
- 3.0 LEAKAGE INDUCTANCE:(P1~P2)WITH J1 AND J2 SHORT) :0.3uH MAX @1 MHZ
 (P3~P6)WITH J3 AND J6 SHORT) :0.3uH MAX @1 MHZ

SIZE A	DRAWING NO. KW-10017-3	REV 01
SCALE N/A		SHEET 2 OF 7

4.0 INTERWINDING CAPACITANCE:(P1~P2):(J1~J2) (P3~P6):(J3~J6)	:35pF MAX @ 1MHZ :35pF MAX @ 1MHZ
5.0 DC RESISTANCE:(J1~J2):(J3~J6)	:1.2 OHMS MAX
6.0 RETURN LOSS: 1MHZ TO 30MHZ 30MHZ TO 80MHZ	:-18dB MIN :-12dB MIN
7.0 DIELECTRIC WITHSTAND:(P1~P2):(J1~J2) (P3~P6):(J3~J6)	:1500VAC :1500VAC
8.0 INSERTION LOSS:RS=RL=100OHM 100KHZ TO 80MHZ	: -1.1dB MIN
9.0 RISE TIME:RS=100 OHMS AND RL=100OHMS OUTPUT VOLTAGE=1V PEAK PULSE WIDTH= 112nS	: 30nS MAX : 30nS MAX
10.0 CROSS TALK: 1MHZ TO 100MHZ	40dB TYP
11.0 COMMON TO COMMON MODE ATTENUATION: 30MHZ TO 100MHZ	:35dB TYP

SIZE A	DRAWING NO. KW-10017-3	REV 01
SCALE N/A		SHEET 3 OF 7

