

# 100/1000 BASE-T TRANSFORMER MODULES

- **D**esigned For Ethernet 100/1000 BASE-T Full Duplex Applications.
- **C**ompliant With IEEE 802.3ab Standard For 1000Base-T.
- **C**able Interface For Isolation And Low Common Mode Emissions.
- **S**upports 4 Pairs Of Category 5 UTP Cable.
- **F**or RoHS Part Add Suffix G.

**RoHS**  
**Compliant**



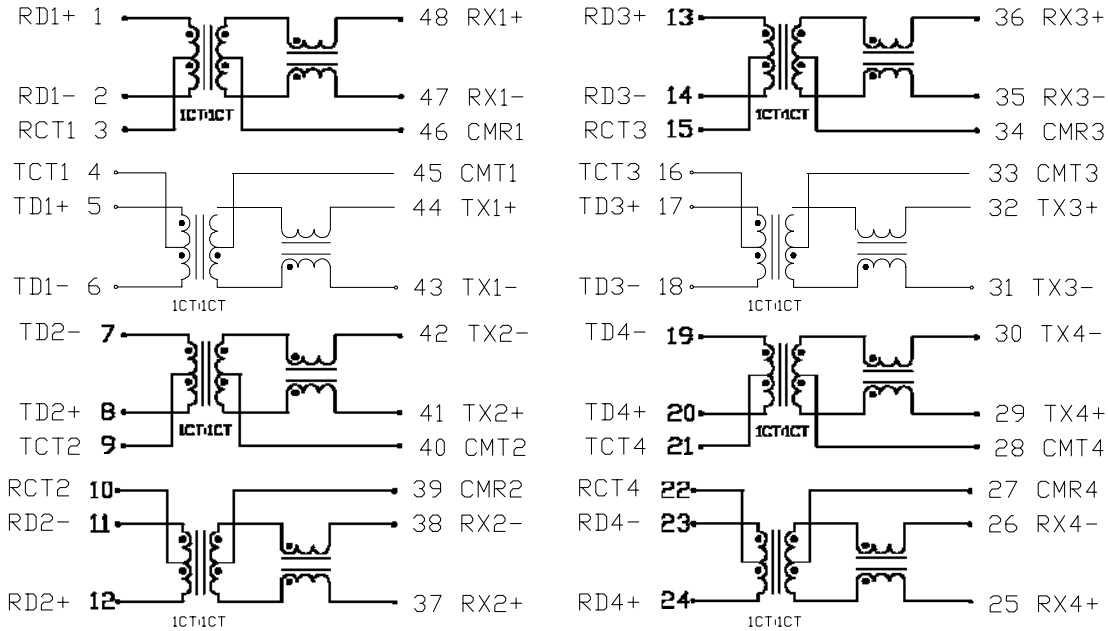
## ELECTRICAL SPECIFICATIONS @ 25°C

Part Number	Insertion Loss (dB max)		Return Loss (dB min)				Differential to Common Mode Rejection (dB typ)			Crosstalk (dB min)		
	1-100MHz	1-30MHz	40MHz	50MHz	60-80MHz	100MHz	30MHz	60MHz z	100MHz	30MHz	60MHz	100MHz
KSW-G48201SO	-1.0	-18	-14.4	-13.1	-12	-10	-43	-37	-33	-40	-35	-30

**Note :** All models meet Isolation Voltage (HiPot) of 1500Vrms

## SCHEMATICS

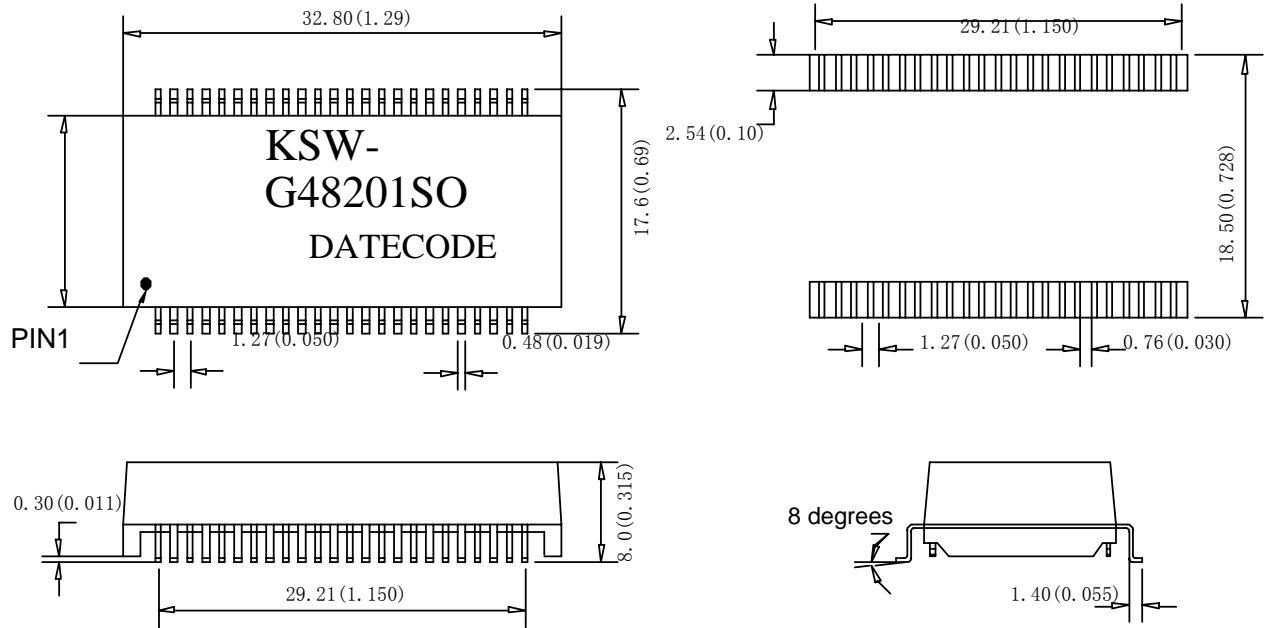
### KSW-G48201SO



# 100/1000 BASE-T TRANSFORMER MODULES

## MECHANICAL SPECIFICATIONS

### KSW-G48201SO



DIMENSIONS : INCHES/(mm) UNLESS OTHERWISE SPECIFIED ALL TOLERANCES ARE ± 0.010(0.25).