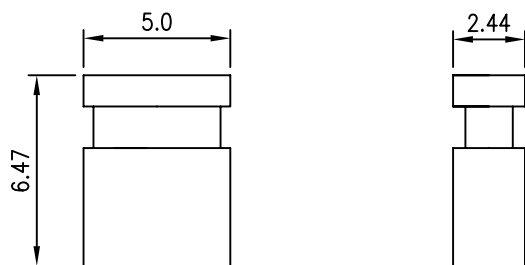
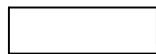
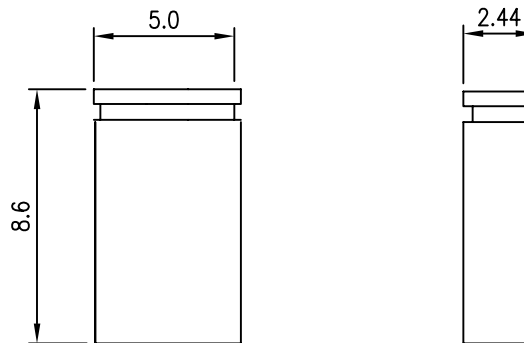
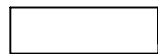


A TYPE



B TYPE



C TYPE

*Features:*

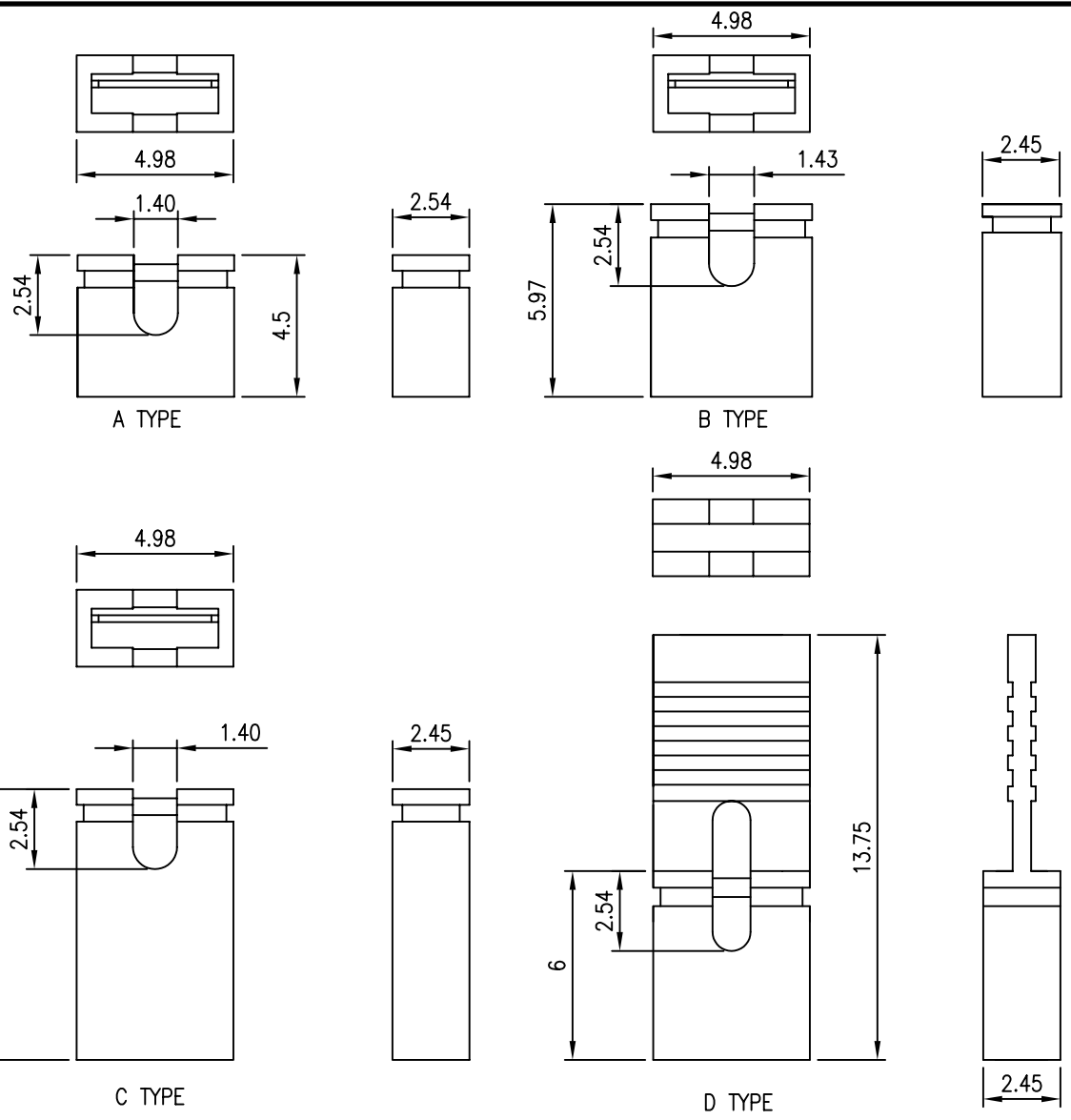
- \* Easiest way of programming by simply connecting contact points together.
- \* Easy applied—No soldering.
- \* All side stackable.
- \* Low cost alternative to DIP switch.
- \* Mate with 2.54mm grid male header connectors e.g.
- \* Material: P.B.T +30%GF UL94V-0
- \* Contact Material: Phosphor Bronze/Gold or Tin Plated

*Ordering information:*

YY-6300-X A X-X  
1 2 3 4

- |           |           |          |
|-----------|-----------|----------|
| 1 A=4.5mm | 4 A=BLACK | G=BLUE   |
| B=6.0mm   | B=BROWN   | H=PURPLE |
| C=8.0mm   | C=RED     | I=GREY   |
| D=13.8mm  | D=ORANGE  | J=WHITE  |
| 2 A=Close | E=YELLOW  | K=PINK   |
| 3 □=Gold  | F=GREEN   | E=YELLOW |
| T=Tin     |           |          |

DITION A0	DATE 2006.05.24	MODIFY DRAWING	DRAW BY	J.Chen	VIEW: 	TOLERANCE		2.54mm(.10") Pitch Mini Jumper		Approved by KINSWOOD ELECTRONICS CORP.
			AUDITING	Jeff		.0	±0.15	PART NO: YY-6300-XAX-X		
			APPROVAL	Jessica		.00	±0.15	DWG NO: Y2541A033		
					UNIT: mm	.000				



**Features:**

- \* Easiest way of programming by simply connecting contact points together.
- \* Easy applied—No soldering.
- \* All side stackable.
- \* Low cost alternative to DIP switch.
- \* Mate with 2.54mm grid male header connectors e.g.
- \* Material: P.B.T +30%GF UL94V-0
- \* Contact Material: Phosphor Bronze/Gold Tin Plated

**Ordering information:**

YY-6300-X B X-X  
1 2 3 4

- |           |           |          |
|-----------|-----------|----------|
| 1 A=4.5mm | 4 A=BLACK | G=BLUE   |
| B=6.0mm   | B=BROWN   | H=PURPLE |
| C=8.0mm   | C=RED     | I=GREY   |
| D=13.8mm  | D=ORANGE  | J=WHITE  |
| 2 B=Open  | E=YELLOW  | K=PINK   |
| 3 □=Gold  | F=GREEN   |          |
| T=Tin     | E=YELLOW  |          |

DITION A0	DATE 2006.06.02	MODIFY DRAWING	DRAW BY J.Chen	VIEW: 	TOLERANCE .0 ±0.15 .00 ±0.15 .000	2.54mm(.10") Pitch Mini Jumper	Approved by KINSWOOD ELECTRONICS CORP.
			AUDITING Jeff	UNIT: mm	PART NO: YY-6300-XBX-X	REV. A0	
			APPROVAL Jessica		DWG NO: Y2541B033		

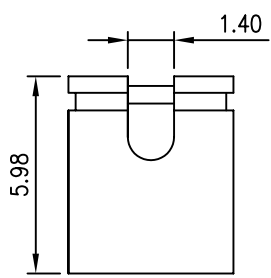
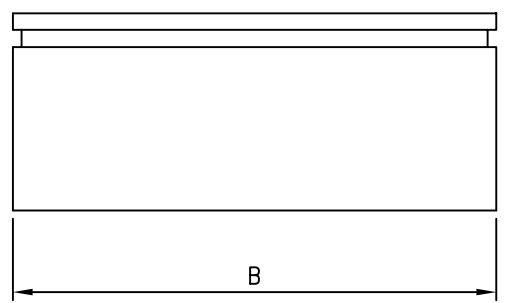
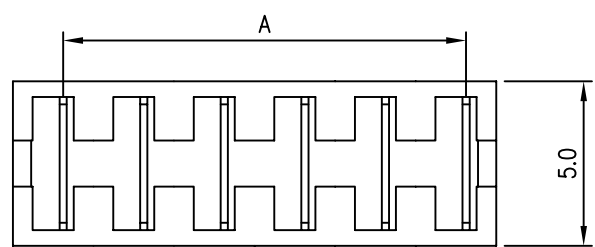
*Features:*

- ⚠ \* Difference type from 04 to 20 position
- \* Multiposition jumper versions facilitate multiprogramming
- \* Dual Beam contact
- \* Mate with 2.54mm grid male header connectors
- \* Material: P.B.T +30%GF UL94V-0
- \* Contact Material: Phosphor Bronze

*Ordering information:*

*YY-6300-B B D X X-X*  
*1 2 3 4 5 6*

- 1 A=4.5mm
- 2 B=Open
- 3 D=Dual Row
- 4 □=Gold
- 5 04~20 Contacts
- 6 A=BLACK G=BLUE
- B=BROWN H=PURPLE
- C=RED I=GREY
- D=ORANGE J=WHITE
- E=YELLOW K=PINK
- F=GREEN
- E=YELLOW
- T=Tin



⚠

Contacts	Dimension mm	
	A	B
4	2.54	5.08
6	5.08	7.62
8	7.62	10.16
10	10.16	12.70
12	12.70	15.21
14	15.21	17.78
16	17.78	20.32
18	20.32	22.86
20	22.86	25.40

DITION	DATE	MODIFY	DRAW BY	J.Chen	VIEW:	TOLERANCE		2.54mm(.10") Pitch Mini Jumper	
A0	2001.08.18	DRAWING	AUDITING	Jeff		.0	±0.15	PART NO: YY-6300-BBDXX-X	
A1	2005.07.01	CHANGE	APPROVAL	Jessica		.00	±0.15	DWG NO: Y2541BBD033	
A2	2006.06.02	CHANGE			UNIT: mm	.000			REV. A2

Approved by  
**KINSWOOD ELECTRONICS CORP.**