

*Features:*

- \* Available in 04 Circuits
- \* Material: Nylon 66 UL94V-2
- \* Accepts YY-3100-T Crimp Terminal
- \* Mates with YY-3200M-H04 Series Housing  
YY-3100-W04S or YY-3100-W04R Series Wafer
- \* Color: Nature

*Ordering information:*

YY-3100F - H 04  
                          1 2

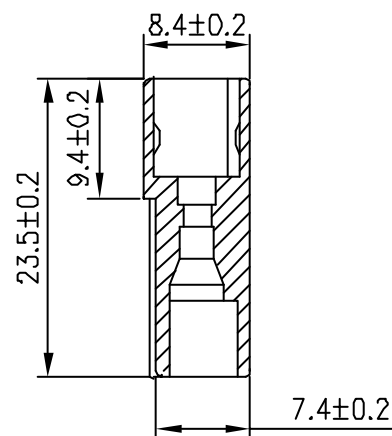
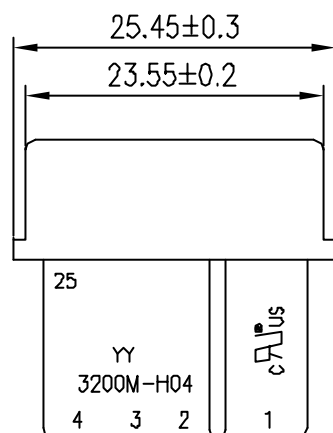
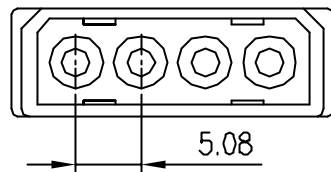
1 H=Housing

2 No. of Circuits 04

EDITION	DATE	MODIFY	DRAW BY	WangJM	VIEW:	TOLERANCE		5.08mm (.200") Pitch Housing	Approved by KINSWOOD ELECTRONICS CORP.
A0	2006.01.17	DRAWING	AUDITING	GUAN		.0	±0.25	PART NO: YY-3100F-H04	
			APPROVAL	SUNNY		.00	±0.15	DWG NO: C5081HF014-09	
					UNIT: mm	.000	±0.05		

*Features:*

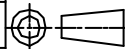
- \* Available in 04 Circuits
- \* Material: Nylon 66 UL94V-2
- \* Accepts YY-3200-T Crimp Terminal
- \* Mates with YY-3100F-H04 Series Housing or Header YY-3100-W04S or YY-3100-W04R Series Wafer

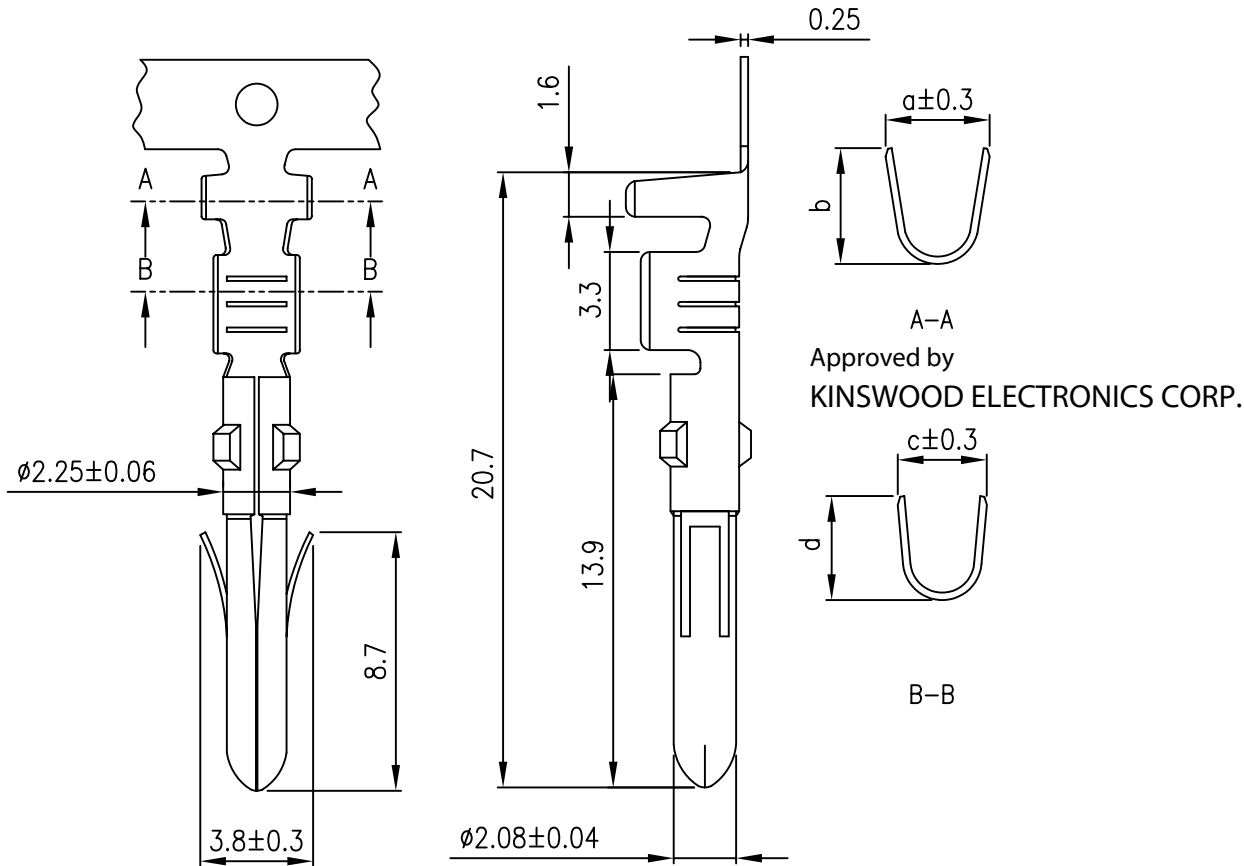


*Ordering information:*

YY-3200M-H 04 X - XX  
1 2 3 4 5 6

- 1 M:Male
- 2 H=Housing
- 3 No. of Circuits 04
- 4  Mark  
N:No Mark
- 5  Nature  
U: 螢光  
UV: 反螢光
- 6 Color  
 Nature F:Green  
A:Black G:Blue  
B:Brown H:Purple  
C:Red I:Gray  
D:Orange J:White  
E:Yellow K:Pink

EDITION	DATE	MODIFY	DRAW BY	WangJM	VIEW:	TOLERANCE	5.08mm (.200 <sup>o</sup> ) Pitch Housing	Approved by KINSWOOD ELECTRONICS CORP.
AO	2006.03.01	DRAWING	AUDITING	GUAN		.0 ±0.25	PART NO: YY-3200M-H04X-XX	
			APPROVAL	SUNNY	UNIT: mm	.00 ±0.15	DWG NO: C5082HM014	
						.000 ±0.05	REV. AO	



**Features:**

- \* Used in YY-3200-HXX Series Housing
- \* Material : Brass
- \* Finish : Tin-Plated
- \* Thickness: 0.25mm

**Ordering information:**

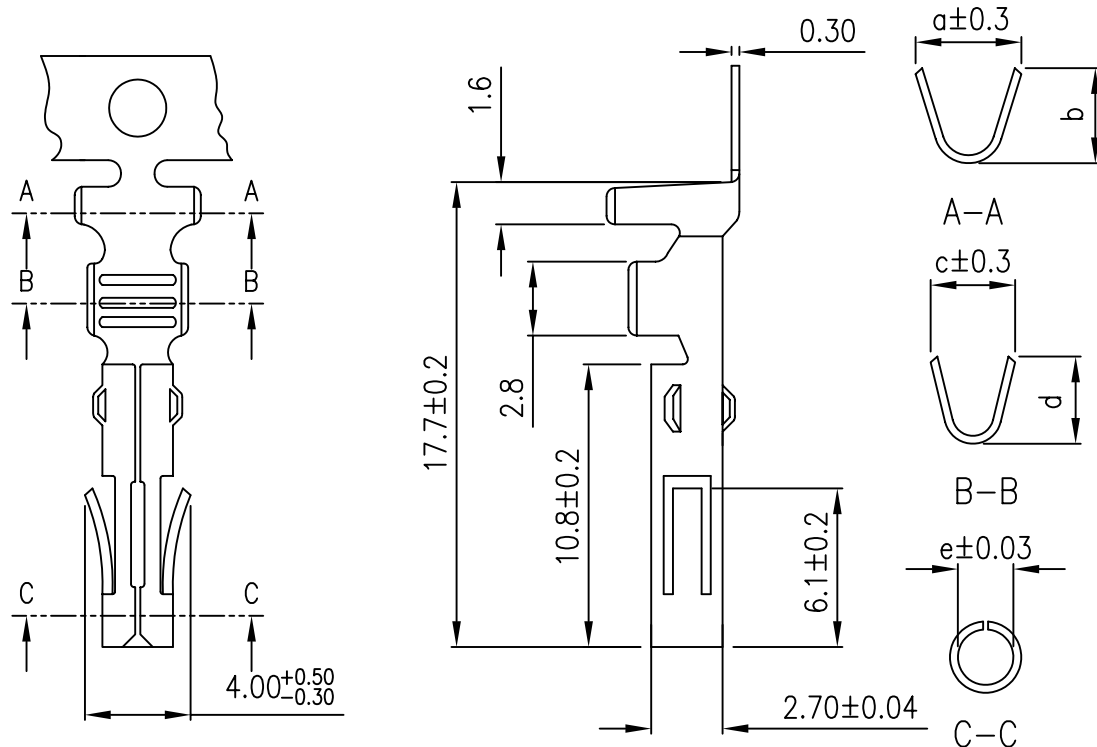
YY-3200-T X X X X  
1 2 3 4 5

- 1 T=Terminal
- 2 Plated:  
T=Tin G=Gold
- 3 Plated Method:  
A: Plated before stamping  
B: Stamping before plated
- 4 Material:  
□BRASS  
P:Phosphor bronze
- 5 L=AWG16~18  
S=AWG18~20

TYPE	Wire Range	Wire Range				Insulation O.D.(mm)	Qty/reel
		a	b	c	d		
L	AWG #16~18	3.5	3.9	2.9	3.4	2.8~3.1	7,000PCS
S	AWG #18~22	3.3	3.5	2.4	2.4	2.4~2.8	7,000PCS

EDITION	DATE	MODIFY	DRAW BY	J.Chen	VIEW:	TOLERANCE	5.08mm (.200") Pitch Crimp Terminal
A0	2004.10.15	DRAWING	AUDITING	Jeff		.0 ±0.25	PART NO: YY-3200-TXXXX
A1	2006.09.01	DRAWING	APPROVAL	Jessica		.00 ±0.13	DWG NO: C5082T012
					UNIT: mm	.000 ±0.08	REV. A1

Approved by  
KINSWOOD ELECTRONICS CORP.



**Features:**

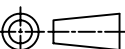
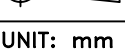
- \* Used in YY-3100F-H Series Housing
- \* Material : Brass & Phosphor Bronze
- \* Finish : Tin-Plated
- \* Thickness: 0.30mm

**Ordering information:**


**YY-3100-T X X X X X**  
1 2 3 4 5

- 1 T=Terminal
- 2 Plated:  
T=Tin G=Gold
- 3 Plated Method:  
A: Plated before stamping  
B: Stamping before plated
- 4 Material:  
□BRASS  
P:Phosphor bronze
- 5 L=AWG16~18  
S=AWG18~20

TYPE	Wire Range	Wire Range						Insulation O.D.(mm)	Qty/reel
		a	b	c	d	e			
						Brass	Phos.Bronze		
L	AWG #16~18	4.0	3.6	3.2	3.3	2.00	2.02	2.8~3.1	7,000PCS
S	AWG #18~20	3.8	3.3	2.3	2.3	2.00	2.02	2.55~2.8	7,000PCS

EDITION	DATE	MODIFY	DRAW BY	J.Chen	VIEW:	TOLERANCE	5.08mm (.200") Pitch Crimp Terminal
A0	2002.01.18	DRAWING	AUDITING	Jeff		.0 ±0.25	PART NO: YY-3100-TXXXX
A1	2006.09.01	CHANGE	APPROVAL	Jessica		.00 ±0.13	DWG NO: C5081T012
					UNIT: mm	.000 ±0.08	EV. A1

Approved by  
**KINSWOOD ELECTRONICS CORP.**

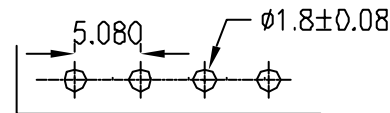
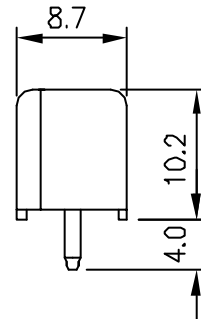
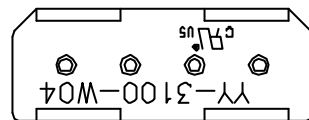
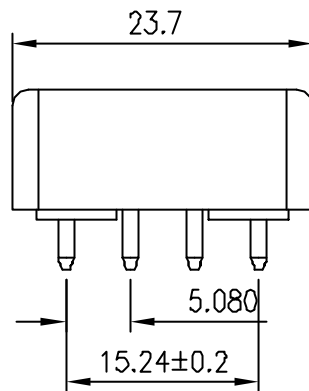
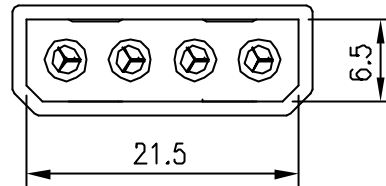
Features:  US E182481

- \* Material: Nylon 66 UL94V-2
- \* Mates with YY-3300-H04 or YY-3100-H04 crimp Housing
- \* Pin Material: Brass/Tin-Plated or Gold-Plated
- \* Two P.C tail lengths

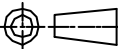
Ordering information:

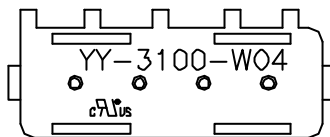
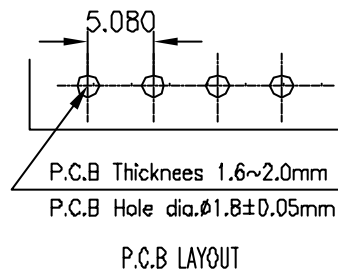
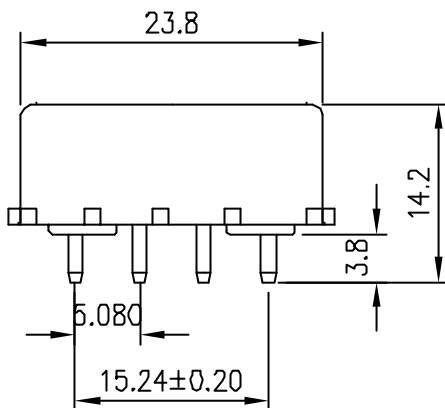
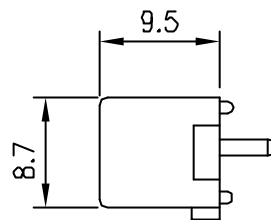
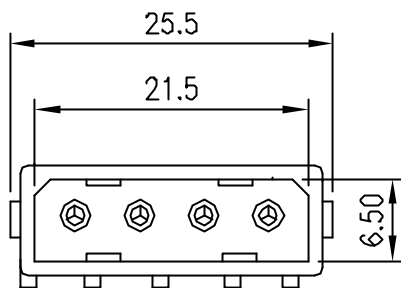
YY-3100-W 04 S X F XXX - XX  
1 2 3 4 5 6 7 8 9 10


- 1 W=Wafer
- 2 No. of Circuits 04
- 3 S=Straight
- 4 Plated: T=Tin G=Gold
- 5 F:Flat
- 6 :With Mark  
N:Without Mark
- 7 :Long Pin  
S:Short Pin
- 8 空心PIN  
1 实心PIN
- 9 :Nature  
U: 透光  
UV: 反透光
- 10 Color: :Nature F:Green  
A:Brown G:Blue  
B:Black H:Purple  
C:Red I:Gray  
D:Orange J:White  
E:Yellow K:Pink  
DC:Orange Red Color  
EF:Yellow Green Color



P.C.B LAYOUT

EDITION	DATE	MODIFY	DRAW BY	WangJM	VIEW:	TOLERANCE	5.08mm(.200")Pitch Wafer	Approved by KINSWOOD ELECTRONICS CORP.
AO	2006.03.30	DRAWING	AUDITING	GUAN		.0 ±0.25	PART NO: YY-3100-W04SXFXXX-XX	
			APPROVAL	SUNNY	UNIT: mm	.00 ±0.15	DWG NO: A5081WS014	
						.000 ±0.05	REV. AO	




**Features:**  E182481

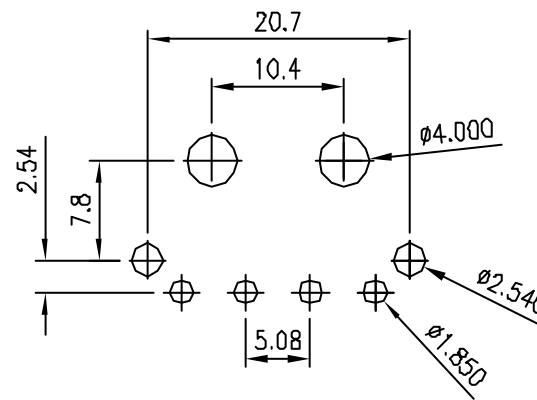
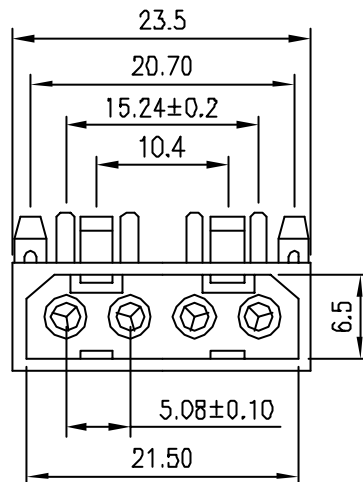
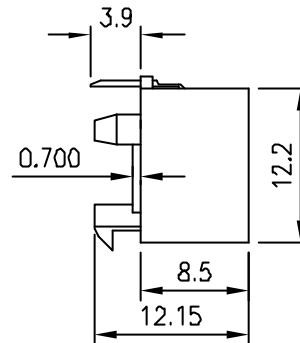
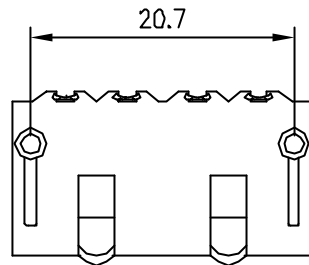
- \* Material: Nylon 66 UL94V-2
- \* Mates with YY-3300-H04 or YY-3100-H04 crimp Housing
- \* Pin Material: Brass/Tin-Plated or Gold-Plated
- \* Two P.C tail lengths

**Ordering information:**

YY-3100-W 04 S X X X X - X X  
1 2 3 4 5 6 7 8 9

- 1 W=Wafer
- 2 No. of Circuits 04
- 3 S=Straight
- 4 Plated: T=Tin G=Gold
- 5 :With Mark  
N:Without Mark
- 6 :Long Pin  
S:Short Pin
- 7  空心 PIN  
1  實心 PIN
- 8 :Nature  
U: 背光  
UV: 反背光
- 9 Color: :Nature F:Green  
A:Black G:Blue  
B:Brown H:Purple  
C:Red I:Gray  
D:Orange J:White  
E:Yellow K:Pink  
DC:Orange Red Color  
EF:Yellow Green Color

EDITION	DATE	MODIFY	DRAW BY	WangJM	VIEW:	TOLERANCE	5.08mm(.200")Pitch Wafer		Approved by KINSWOOD ELECTRONICS CORP.
AO	2006.03.30	DRAWING	AUDITING	GUAN		.0 ±0.25	PART NO: YY-3100-W04SXXXX-XX		
			APPROVAL	SUNNY	UNIT: mm	.00 ±0.15	DWG NO: A5081WS014		
						.000 ±0.05	REV.	AO	



P.C.B LAYOUT

**Features:**

- \* Material: Nylon 66 UL94V-2
- \* Mates with YY-3300-H04 or YY-3100-H04 crimp Housing
- \* Contact Material: Brass/Tin-Plated or Gold-Plated
- \* Two P.C tail lengths
- \* P.C.B Thickness 1.6mm

**Ordering information:**

YY-3100-W 04 R X X - X  
 $\overline{1} \overline{2} \overline{3} \overline{4} \overline{5} \overline{6}$

- 1 W=Wafer
- 2 No. of Circuits 04
- 3 R=Right
- 4 Plated: T=Tin G=Gold
- 5 □:With Mark  
N:Without Mark
- 6 □:Nature  
B:Black Color

EDITION	DATE	MODIFY	DRAW BY	WangJM	VIEW:	TOLERANCE	5.08mm(.200")Pitch Wafer	Approved by KINSWOOD ELECTRONICS CORP.
AO	2006.03.30	DRAWING	AUDITING	GUAN		.0 ±0.25	PART NO: YY-3100-W04RXX-X	
			APPROVAL	SUNNY	UNIT: mm	.00 ±0.15	DWG NO: A5081WR014	
						.000 ±0.05	REV. AO	