

Features:

- * Available in 02 through 12 Circuits
- * Material: Nylon 66 UL94V-0
- * Accepts YY-1550-TM Crimp Terminal
- * Mates with YY-1500-HM Series Housing

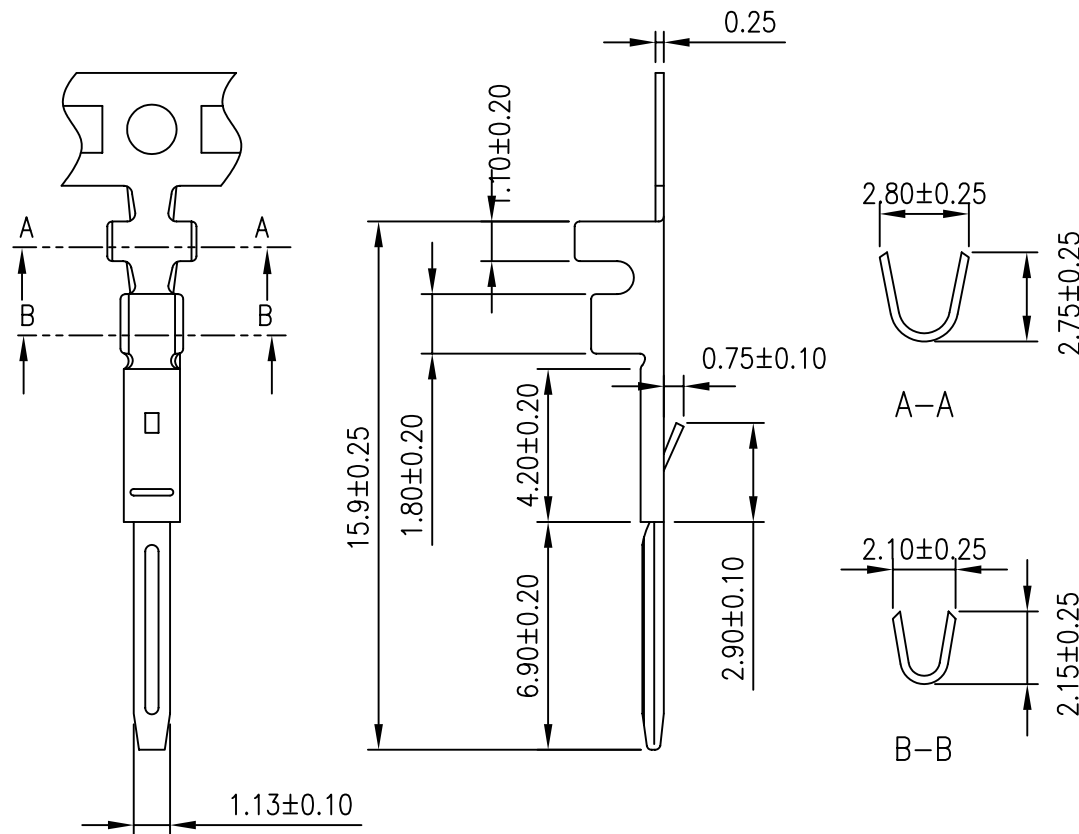
Ordering information:

YY-1500-H XX F
 $\frac{1}{1} \frac{2}{2} \frac{3}{3}$

- 1 H=Housing
- 2 No. of Circuits 02~12
- 3 F:Female

Circuits	Dimension mm	
	A	B
2	2.50	8.00
3	5.00	10.50
4	7.50	13.00
5	10.00	15.50
6	12.50	18.00
7	15.00	20.50
8	17.50	23.00
9	20.00	25.50
10	22.50	28.00
11	25.00	30.50
12	27.50	33.00

EDITION	DATE	MODIFY	DRAW BY	J.Chen	VIEW:	TOLERANCE		2.50mm (.098") Pitch Housing		Approved by KINSWOOD ELECTRONICS CORP.
A0	2001.06.15	DRAWING	AUDITING	Jeff		.0		PART NO: YY-1500-HXXF		
A1	2006.08.17	DRAWING	APPROVAL	Jessica		.00		DWG NO: C2501HF152		
						UNIT: mm	.000		REV. A1	



Features:

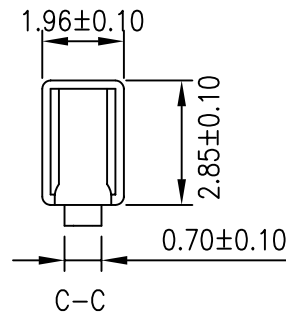
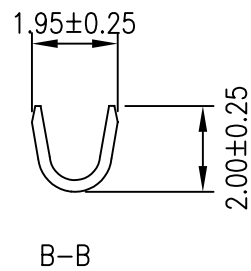
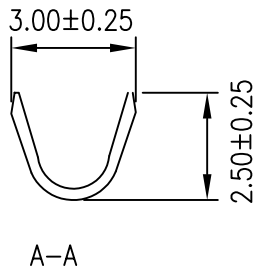
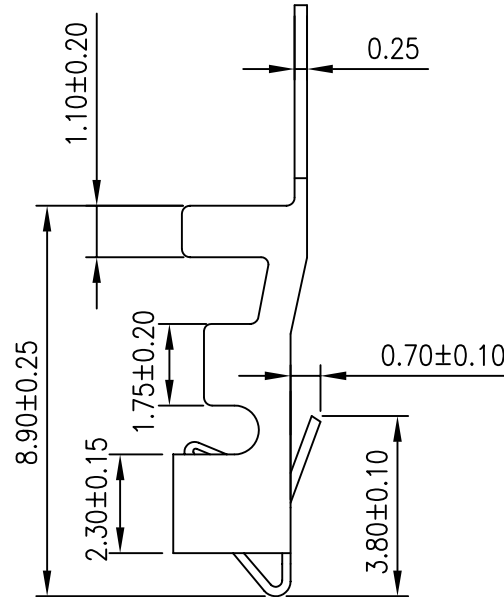
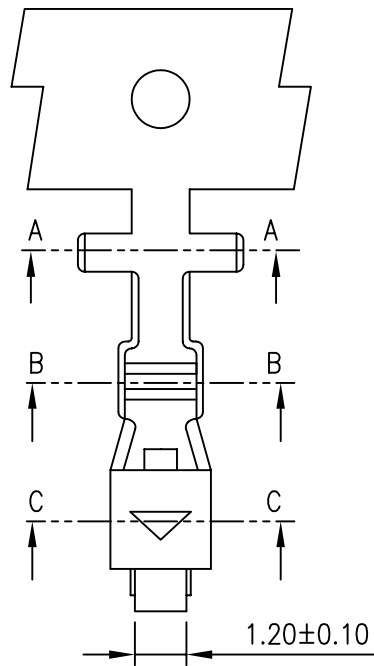
- * Used in YY-1500-HXXF series housing
- * Accepts AWG #24~28 wire range
- * Insulation O.D.=1.70 mm (max)
- * Material : Brass
- * Finish : Tin-plated
- * Qty/Reel : 7,000PCS
- * Thickness: 0.25mm

Ordering information:

△ YY-1500-T M X X X
I 2 3 4 4

- 1 T=Terminal
- 2 M:Male
- 3 Plated:
T=Tin G=Gold
- 4 Plated Method:
A: Plated before stamping
B: Stamping before plat
- 5 Material:
□BRASS
P:Phosphor bronze

EDITION	DATE	MODIFY	DRAW BY	J.Chen	VIEW:	TOLERANCE	2.50mm (.098") Pitch Male Crimp Terminal	Approved by KINSWOOD ELECTRONICS CORP.
A0	2002.04.08	DRAWING	AUDITING	Jeff		.0	PART NO: YY-1500-TMXXX	
A1	2004.07.19	CHANGE	APPROVAL	Jessica	UNIT: mm	.00	DWG NO: C2501TM152	
A2	2006.08.17	CHANGE				REV. A2		



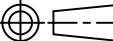
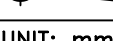
Features:

- * Used in YY-1500-HM series housing
- * Accepts AWG #24~28 wire range
- * Insulation O.D.=1.70 mm (max)
- * Material : Brass
- * Finish : Tin-plated
- * Qty/Reel : 7,000PCS
- * Thickness: 0.25mm

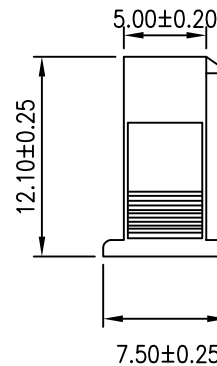
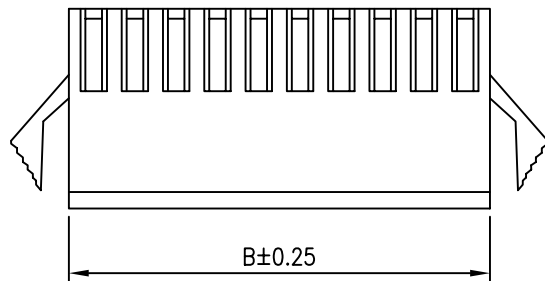
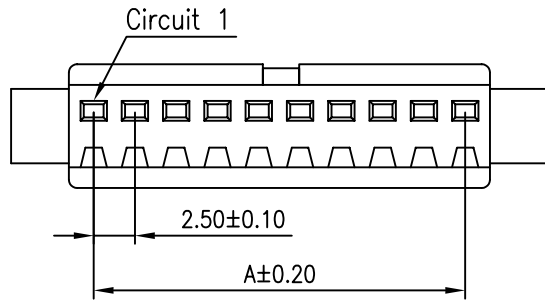
Ordering information:

△ YY-1500-T F X X X
I 2 3 4 4

- 1 T=Terminal
- 2 F:Female
- 3 Plated:
T=Tin G=Gold
- 4 Plated Method:
A: Plated before stamping
B: Stamping before plat
- 5 Material:
□BRASS
P:Phosphor bronze

EDITION	DATE	MODIFY	DRAW BY	J.Chen	VIEW:	TOLERANCE	2.50mm (.098") Pitch Female Crimp Terminal
A0	2002.04.08	DRAWING	AUDITING	Jeff		.0	PART NO: YY-1500-TFXXX
A1	2004.07.19	CHANGE	APPROVAL	Jessica		.00	DWG NO: C2501TF152
A2	2006.08.17	CHANGE				UNIT: mm	

Approved by
KINSWOOD ELECTRONICS CORP.



Features:

- * Available in 02 through 12 Circuits
- * Material: Nylon 66 UL94V-0
- * Accepts YY-1500-TF Crimp Terminal
- * Mates with YY-1500-HF Series Housing

Ordering information:

YY-1500-H XX M
1 2 3

- 1 H=Housing
- 2 No. of Circuits 02~12
- 3 M:Male

Circuits	Dimension mm	
	A	B
2	2.50	5.50
3	5.00	8.00
4	7.50	10.50
5	10.00	13.00
6	12.50	15.50
7	15.00	18.00
8	17.50	20.50
9	20.00	23.00
10	22.50	25.50
11	25.00	28.00
12	27.50	30.50

EDITION	DATE	MODIFY	DRAW BY	J.Chen	VIEW:	TOLERANCE	2.50mm (.098") Pitch Male Housing
A0	2001.06.15	DRAWING	AUDITING	Jeff		.0 ±0.25	PART NO: YY-1500-HXXM
A1	2005.11.04	CHANGE	APPROVAL	Jessica		.00 ±0.20	DWG NO: C2501HM152
A2	2006.08.17	CHANGE				UNIT: mm	

Approved by
 KINSWOOD ELECTRONICS CORP.